

1969

COURSE

WIRING and VACUUM DIAGRAMS

DEMO

This DEMO contains only a few pages of the entire manual/product.

Not all Bookmarks work on the Demo, but they do on the full version.

Features:

- Searchable text
- Printable pages
- Bookmarked for easy navigation
- High Resolution images
- Zoom to see exact details
- Money back Guarantee
- Available on USB and eBook download



SERVICE

BUY IT NOW!

Click Here To Order



FORM 7795P-69

Copyright © 2023, Forel Publishing Company, LLC, Woodbridge, Virginia

All Rights Reserved. No part of this book may be used or reproduced in any manner whatsoever without written permission of Forel Publishing Company, LLC. For information write to Forel Publishing Company, LLC, Woodbridge, VA 22192

1969 Ford Truck Wiring Diagrams

EAN: 978-1-60371-391-7

ISBN: 1-60371-391-3

Forel Publishing Company, LLC
Woodbridge, VA 22192
Email: sales@ForelPublishing.com
<https://www.ForelPublishing.com>



License #84356800

This publication contains material that is reproduced and distributed under a license from Ford Motor Company. No further reproduction or distribution of the Ford Motor Company material is allowed without the express written permission of Ford Motor Company.

Note from the Publisher

This product was created from the original Ford Motor Company's publication. Every effort has been made to use the original scanned images, however, due to the condition of the material; some pages have been modified to remove imperfections.

Disclaimer

Although every effort was made to ensure the accuracy of this book, no representations or warranties of any kind are made concerning the accuracy, completeness or suitability of the information, either expressed or implied. As a result, the information contained within this book should be used as general information only. The author and Forel Publishing Company, LLC shall have neither liability nor responsibility to any person or entity with respect to any loss or damage caused, or alleged to be caused, directly or indirectly by the information contained in this book. Further, the publisher and author are not engaged in rendering legal or other

professional assistance is required, the professional should be sought.



1969 BRONCO, ECONOLINE AND P-SERIES TRUCK WIRING DIAGRAMS

SECTION 8 INDEX

AIR CONDITIONER

Econoline8-E25

ALTERNATOR

Bronco 55 Amp8-E3
Econoline8-E22 & E23

AUTOMATIC TRANSMISSION

Econoline8-E30

CHARGING

Bronco8-E4 & E5
P-Series
Gas Engine8-E13
Diesel Engine8-E14
Econoline8-E22, E23, E26 & E27

CIGAR LIGHTER

Bronco8-E8
Econoline8-E29

EXTERIOR LIGHTS

Bronco8-E6 & E7
P-Series
Gas Engine8-E16
Diesel Engine8-E17
Econoline8-E20 & E21

FUEL SYSTEMS

Bronco Auxiliary Fuel Tank8-E11
P-Series Fuel Shut-off8-E18

GAUGES

Bronco8-E4 & E5
P-Series
Gas Engine8-E13
Diesel Engine8-E14
Econoline8-E22, E23, E26 & E27

HEATER

Bronco8-E12
Econoline
(Fresh Air)8-E24
(Auxiliary)8-E24

HORNS

Bronco8-E10
P-Series8-E18
Econoline8-E28

IGNITION

Bronco8-E4 & E5
P-Series
Gas Engine8-E13
Diesel Engine8-E14
Econoline8-E26 & E27

INSTRUMENT PANEL

Bronco8-E2
Econoline8-E19

INSTRUMENT LIGHTS

Bronco8-E8
P-Series
Gas Engine8-E16
Diesel Engine8-E17
Econoline8-E29

STARTING

Bronco8-E4 & E5
P-Series
Gas Engine8-E13 & E15
Diesel Engine8-E14
Econoline8-E26 & E27

AUTOMATIC TRANSMISSION8-E30

TURN SIGNALS

Bronco8-E6 & E7
P-Series
Gas Engine8-E16
Diesel Engine8-E17
Econoline8-E20 & E21

WINDSHIELD WIPERS AND WASHERS

Bronco8-E9
Econoline8-E31

100% SATISFACTION GUARANTEED

BUY IT NOW!

Click Here To Order

HOW TO USE THE WIRING DIAGRAMS

THE INDEX PAGE IS THE FIRST PAGE IN EACH SECTION. EACH ELECTRICAL SCHEMATIC WILL HAVE A NOTATION AS TO THE SOURCE OF POWER FOR THAT SYSTEM. ALL WIRES WILL BE SHOWN AS SINGLE LINES TO PROVIDE A CLEAR UNDERSTANDING OF THE DIAGRAMS. TO TRACE A CIRCUIT, IT IS RECOMMENDED TO START AT THE GROUND CIRCUIT OF THE INOPERATIVE COMPONENT, TRACE IT THROUGH ALL CONNECTORS TO THE SOURCE, AND NOTE THE POSSIBLE TROUBLE AREAS AND POINTS OF MOST CONVENIENT ACCESS. WIRE CONNECTORS WILL BE IDENTIFIED ON THE SCHEMATIC AND THE PICTORIAL DRAWINGS, THIS WILL SHOW THE TECHNICIAN THE LOCATION OF THE CONNECTORS. MOST WIRE CONNECTORS ARE SHOWN IN OPEN BOOK FASHION. A WIRE ON THE TOP RIGHT OF A CONNECTOR (OPEN SIDE BY SIDE) WILL BE ON THE TOP LEFT SIDE OF THE OTHER HALF OF THE CONNECTOR. SEE FIGURE 1 (WIRE #140 TO #140A, ETC.).

WIRE DISCONNECTS AND CONNECTORS WILL ALL BE BLACK UNLESS A COLOR CODE IS NOTED ON THE DIAGRAM. THE COLORED DISCONNECTS AND CONNECTORS ARE TO AID THE TECHNICIAN IN FINDING THE PROPER CIRCUIT TO BE TESTED OR TRACED. THE ELECTRICAL SYMBOLS AND THEIR MEANINGS ARE NOTED ON EACH DIVIDER PAGE TO PROVIDE A CLEARER UNDERSTANDING OF THE DIAGRAMS. PICTORIAL DRAWINGS OF A COMPONENT WILL INCLUDE THE SPECIFIC LOCATION OF SOME COMPONENTS IN CASES WHERE IT IS DIFFICULT TO DETERMINE IF THE COMPONENT IS UNDER THE INSTRUMENT PANEL OR IN THE ENGINE COMPARTMENT.

RELAYS AND SWITCHES ARE SHOWN IN THE "SYSTEM OFF" POSITION. IF A VEHICLE SPECIFIC WIRE COLOR IN A CONNECTOR DOES NOT MATCH THE DIAGRAM SHOWN, IT CAN USUALLY BE IDENTIFIED BY COMPARING THE OTHER COLORS SHOWN AT THE WIRE CONNECTORS. SPECIFIC WIRE COLOR DEVIATIONS IN THE MANUFACTURING OF A WIRE HARNESS ARE USUALLY FOR A SHORT DURATION.

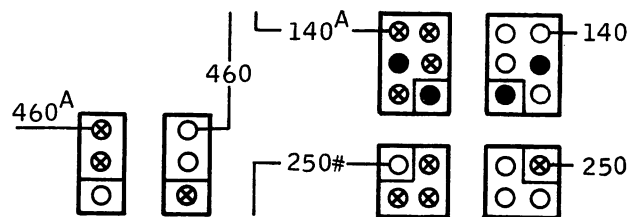


Figure 1

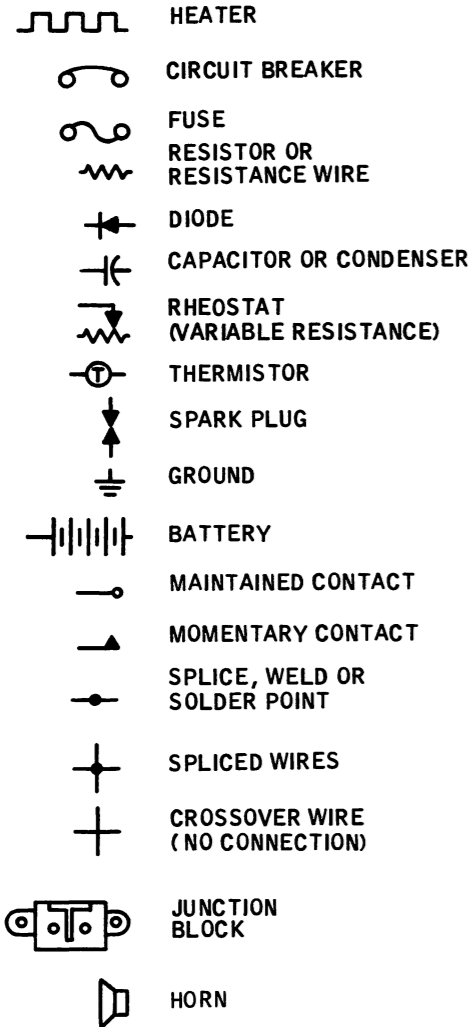
100% SATISFACTION GUARANTEED

BUY IT NOW!

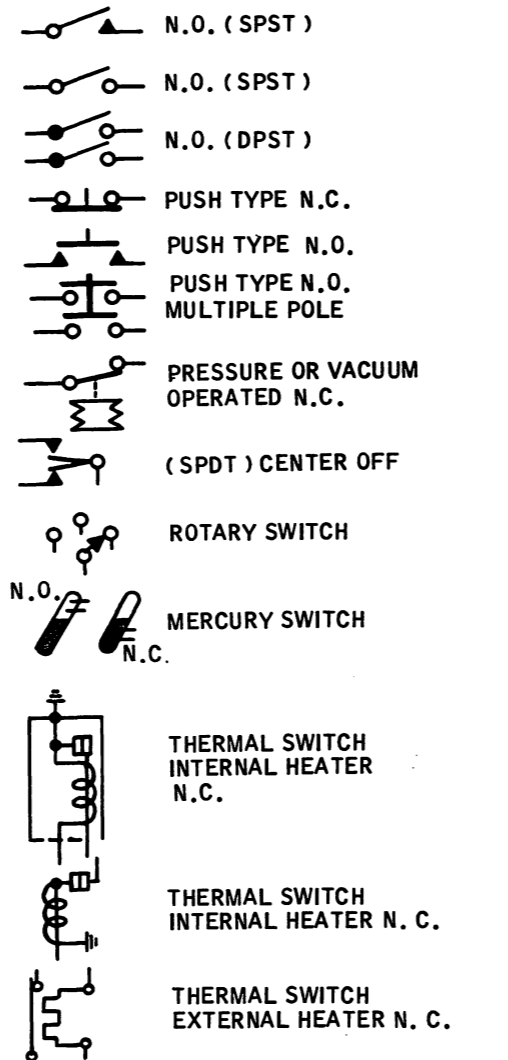
Click Here To Order

PayPal Discover Novus MasterCard VISA

CIRCUIT SYMBOLS

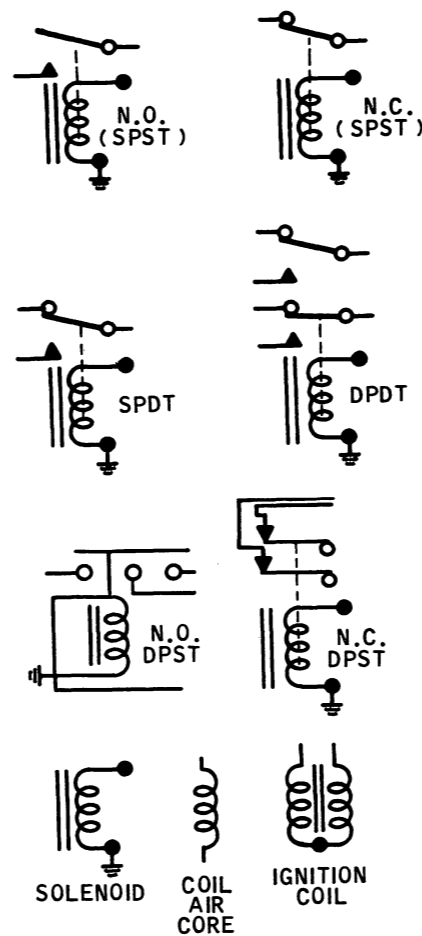


SWITCHES

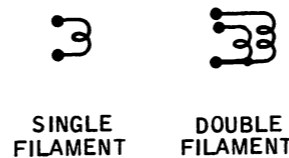


N.O. - NORMALLY OPEN
 N.C. - NORMALLY CLOSED
 S.P.S.T. - SINGLE POLE, SINGLE THROW
 D.P.S.T. - DOUBLE POLE, SINGLE THROW
 S.P.D.T. - SINGLE POLE, DOUBLE THROW
 D.P.D.T. - DOUBLE POLE, DOUBLE THROW

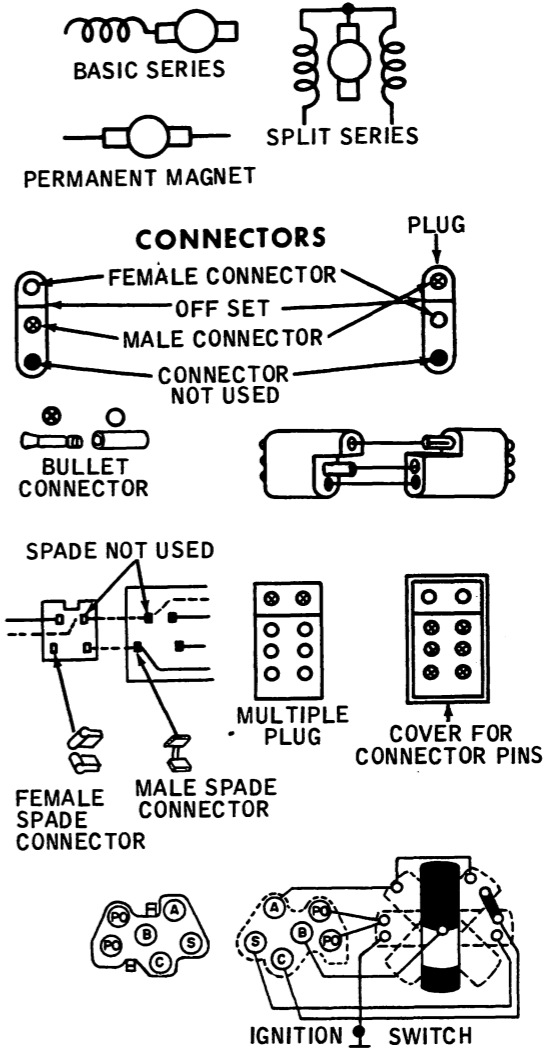
RELAYS



LAMPS



MOTORS



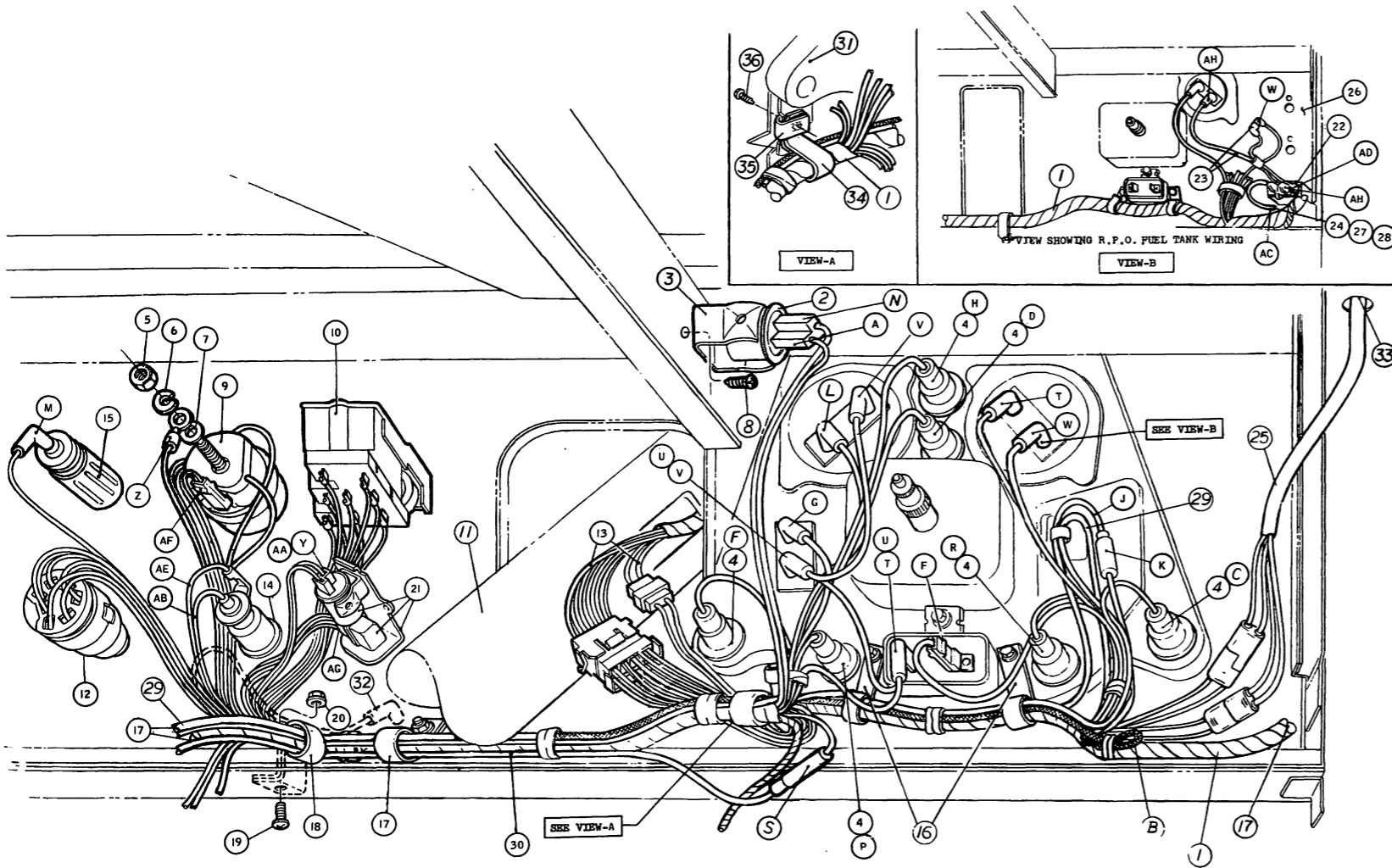
~ AND/OR * WIRE FUNCTION NOT APPLICABLE TO THIS CIRCUIT
 (14), (16) ETC. ALL NUMBERS IN PARENTHESIS () INDICATE WIRE GAGES
 (A), (B), ETC. ALL LETTERS CIRCLED INDICATE CONNECTION LOCATION.
 ★ TO POWER SOURCE

100% SATISFACTION GUARANTEED

BUY IT NOW!

[Click Here To Order](#)

ICE



- | | | |
|----|----------------------------------|-----------|
| 1 | 14401 WIRING ASSY. STD. PROD. | (55 AMP.) |
| 2 | 14401 WIRING ASSY. R.P.O. | |
| 3 | 13350 FLASHER ASSY. | |
| 4 | 13351 BRACKET | |
| 5 | 13466 BULB ASSY. (6-REQD.) | |
| 6 | NUT | |
| 7 | LOCK WASHER | |
| 8 | WASHER | |
| 9 | SCREW | |
| 10 | IGNITION SWITCH | |
| 11 | LIGHTING SWITCH | |
| 12 | STEERING COLUMN | |
| 13 | W/SHIELD WIPER & WASHER SWITCH | |
| 14 | STEERING COLUMN WIRING | |
| 15 | DUAL BRAKE WARNING LAMP | |
| 16 | CIGAR LIGHTER (R.P.O.) | |
| 17 | EXISTING CLIPS ON INSTR. CLUSTER | |
| 18 | CLIP | |
| A | 8A ORANGE-YELLOW STRIPE | |
| B | 16 PINK | |
| C | 19B BLUE-RED STRIPE | |
| D | 19C BLUE-RED STRIPE | |
| E | 19D BLUE-RED STRIPE | |
| F | 30 BLACK-GREEN STRIPE | |
| G | 31 WHITE-RED STRIPE | |
| H | 34 GREEN-BLACK STRIPE | |
| J | 37B BLACK-YELLOW STRIPE | |
| K | 38 BLACK | |
| L | 39 RED-WHITE STRIPE | |
| M | 40 BLUE-WHITE STRIPE | |
| N | 44 BLUE | |
| P | 49 WHITE-BLUE STRIPE | |
| R | 50 GREEN-WHITE STRIPE | |
| S | 53 BLACK-BLUE STRIPE | |
| T | 60 BLACK-WHITE STRIPE | |
| U | 60A BLACK-WHITE STRIPE | |
| V | 60B BLACK-WHITE STRIPE | |
| W | 286 ORANGE | |
| Y | 385 WHITE-RED STRIPE | |
| Z | 297 BLACK-GREEN STRIPE | |

- | | |
|----|--|
| 19 | SCREW |
| 20 | NUT |
| 21 | EMERGENCY FLASHER |
| 22 | 9A050 SWITCH ASSY. |
| 23 | 14407 WIRING ASSY. |
| 24 | 14406 WIRE ASSY. |
| 25 | 17B587 WIRING ASSY. |
| 26 | INSTRUMENT PANEL |
| 27 | |
| 28 | |
| 29 | 55 AMP. ALZ. ONLY |
| 30 | 13A709 WIRING ASSY. R.P.O. |
| 31 | INSTRUMENT CLUSTER |
| 32 | ROUTE LEAD FOR CIGAR LIGHTER THRU CLIP WHEN LIGHTER IS NOT INSTALLED |
| 33 | CLIP |
| 34 | CLIP |
| 35 | EXISTING NUT ON INSTR. CLUSTER |
| 36 | EXISTING SCREW. |
| AP | 383 RED-WHITE STRIPE |
| AB | 640 RED-YELLOW STRIPE |
| AC | 29 YELLOW-WHITE STRIPE |
| AD | 286 ORANGE |
| AE | 977 VIOLET |
| AF | 977A VIOLET |
| AG | BLACK INSULATOR |
| AH | 286A ORANGE |

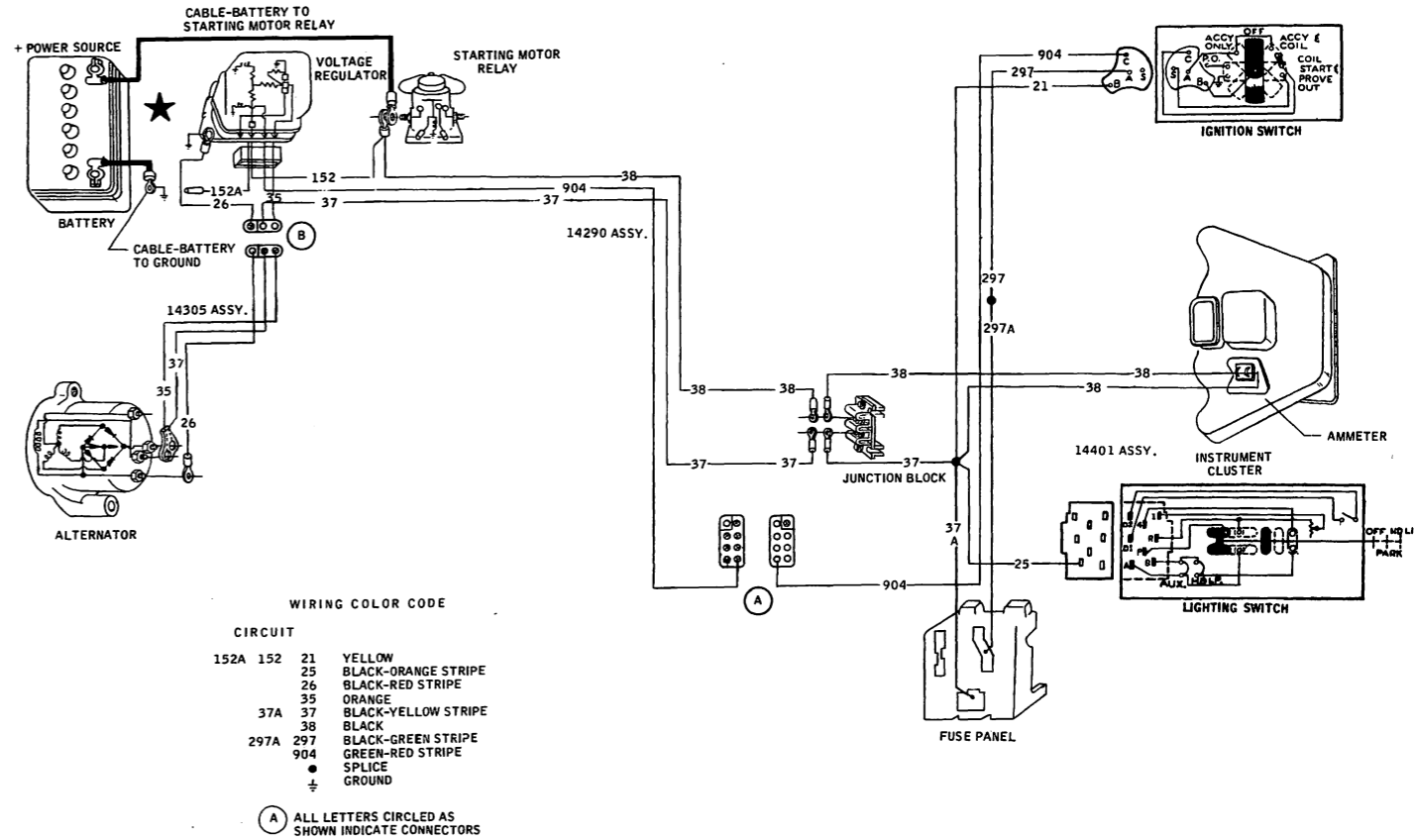
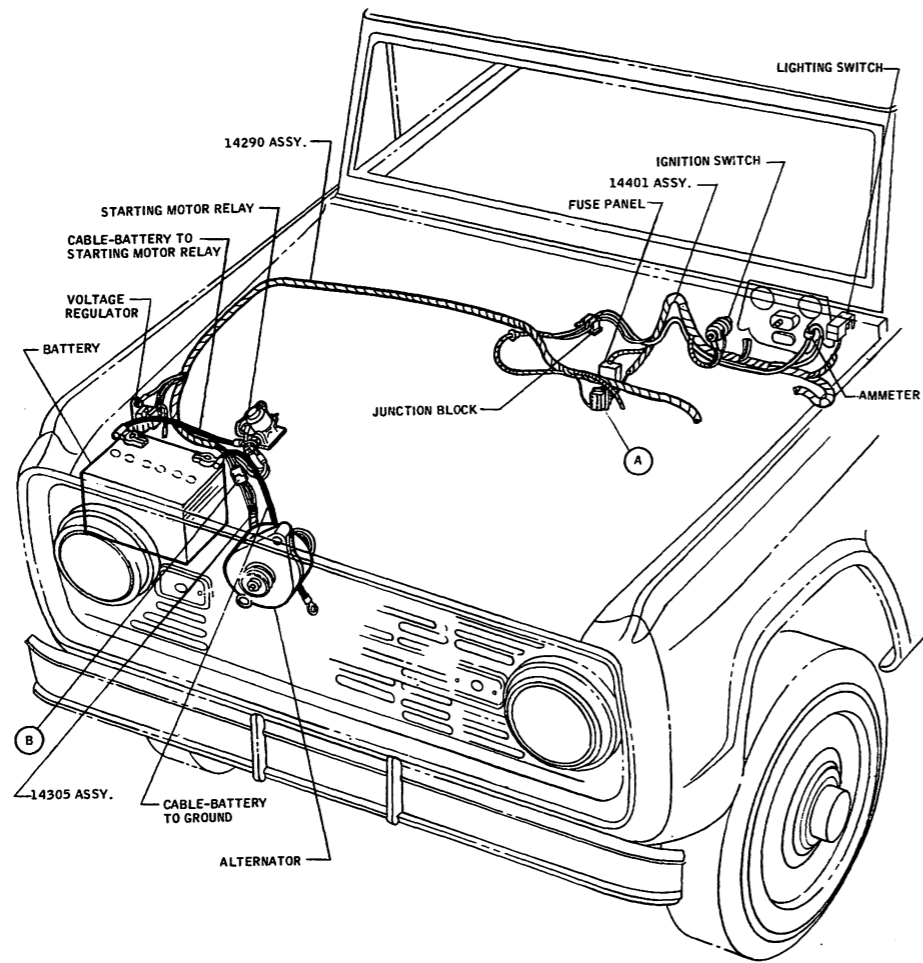
100% SATISFACTION GUARANTEED

BUY IT NOW!

[Click Here To Order](#)

PayPal American Express Discover MasterCard VISA

1969 BRONCO INSTRUMENT PANEL WIRING

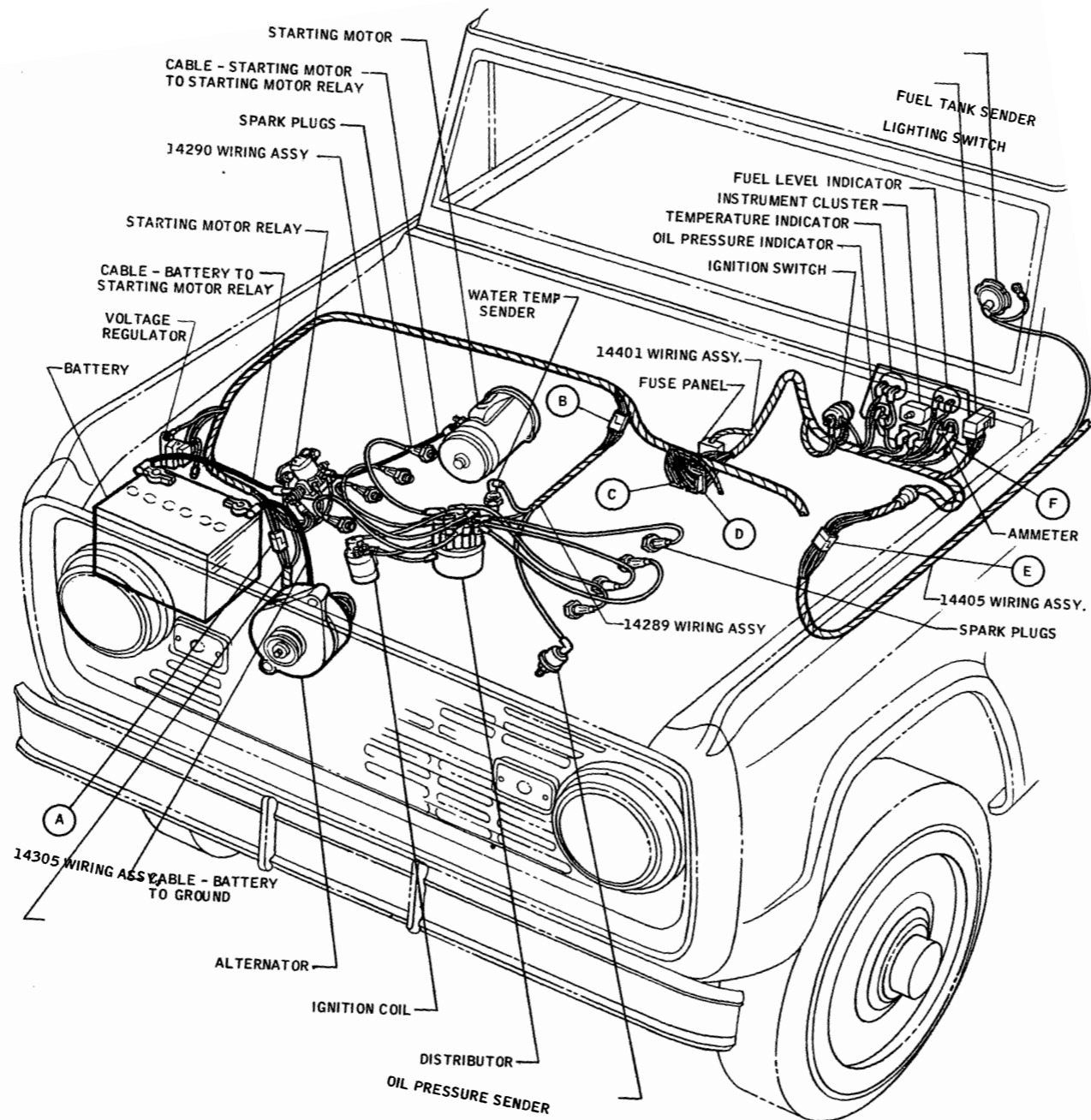


100% SATISFACTION GUARANTEED

BUY IT NOW!

[Click Here To Order](#)

1969 BRONCO ALTERNATOR (55 AMP.)

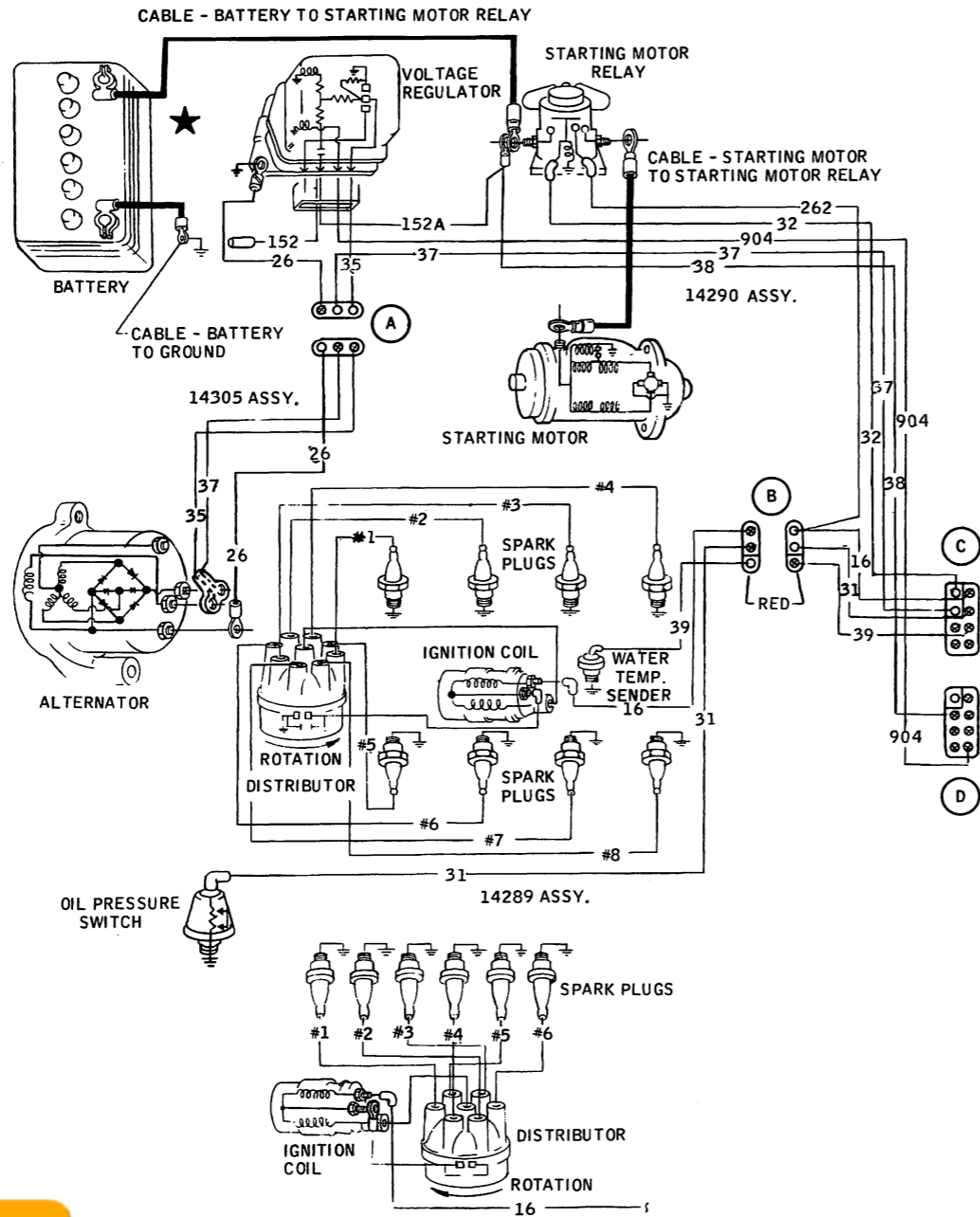


1969 BRONCO IGNITION, STARTING, POWER, CHARGING & GAUGES

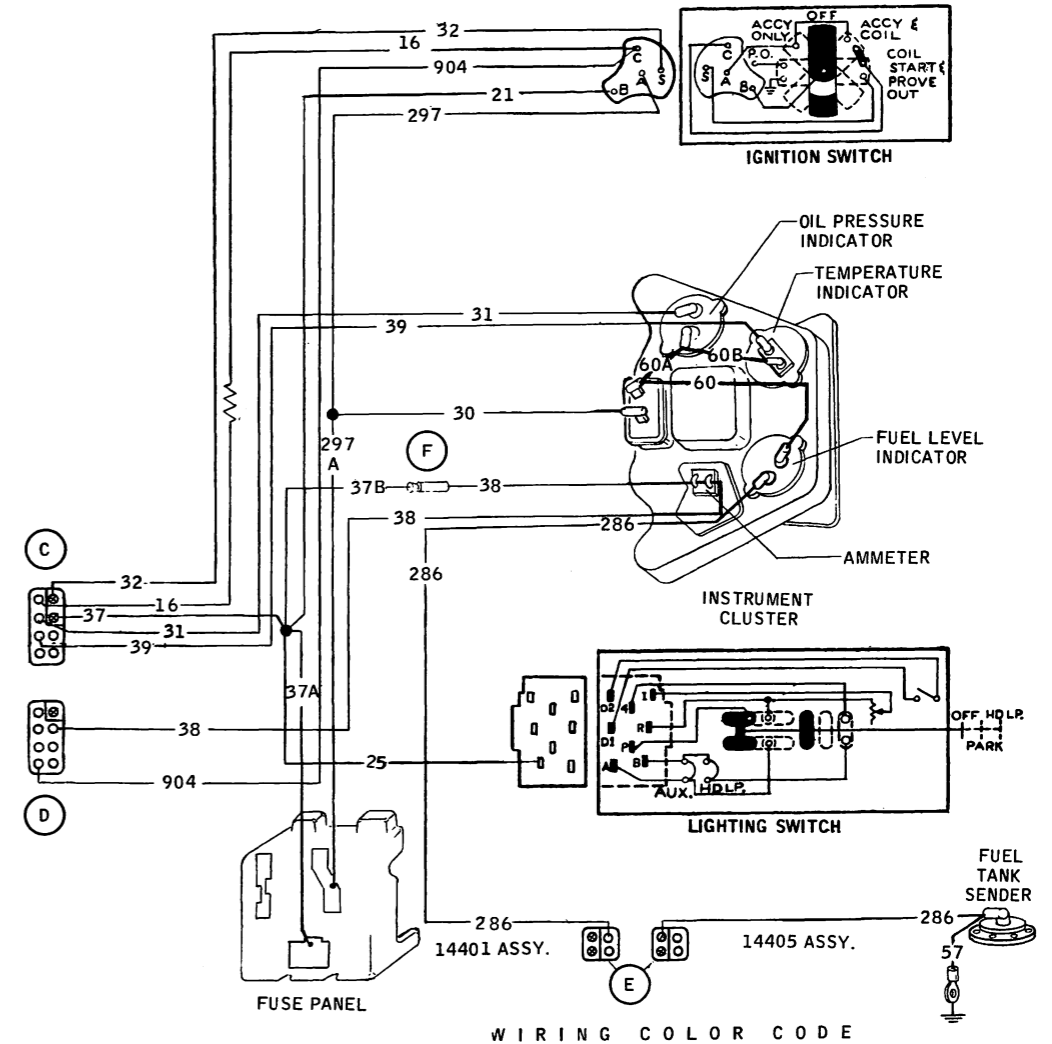


BUY IT NOW!

[Click Here To Order](#)



VIEW SHOWING HI-TENSION CIRCUIT FOR 6 CYL. ENGINE



ALL CONNECTORS ARE BLACK UNLESS OTHERWISE SPECIFIED.

16	RED-GREEN STRIPE	37B	37A	37	BLACK-YELLOW STRIPE
016	PINK (RESISTOR WIRE)	57	38		BLACK
21	YELLOW	60 THRU 60B	39		RED-WHITE STRIPE
25	BLACK-ORANGE STRIPE		262		BLACK-WHITE STRIPE
26	BLACK-RED STRIPE	35	286		BROWN
297A	30		904		ORANGE
	31		●		GREEN-RED STRIPE
	32		⊕		SPLICE
					GROUND

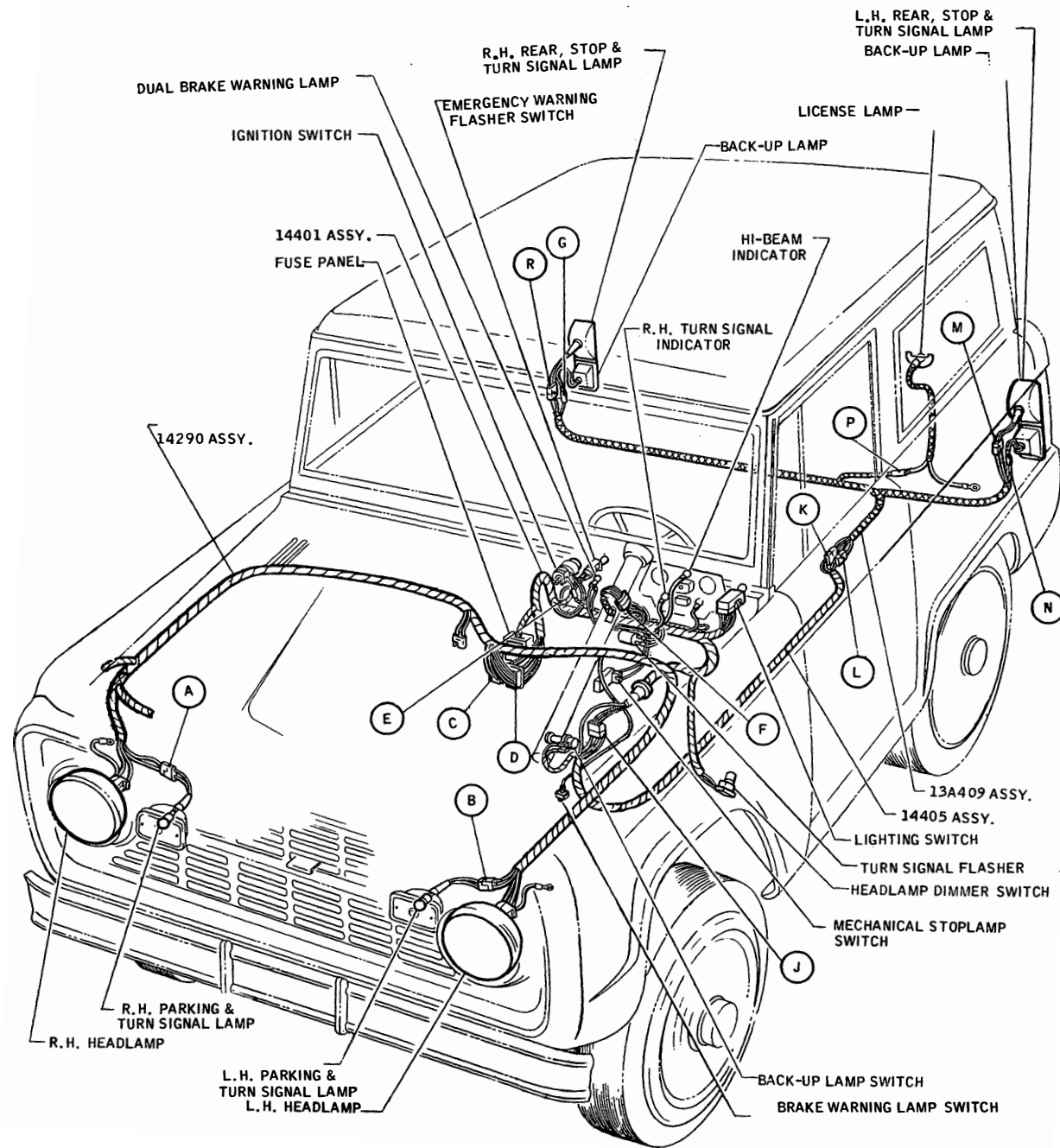
(A) ALL LETTERS CIRCLED AS SHOWN INDICATE CONNECTORS

100% SATISFACTION GUARANTEED

BUY IT NOW!

Click Here To Order

1969 BRONCO IGNITION, STARTING, POWER, CHARGING & GAUGES



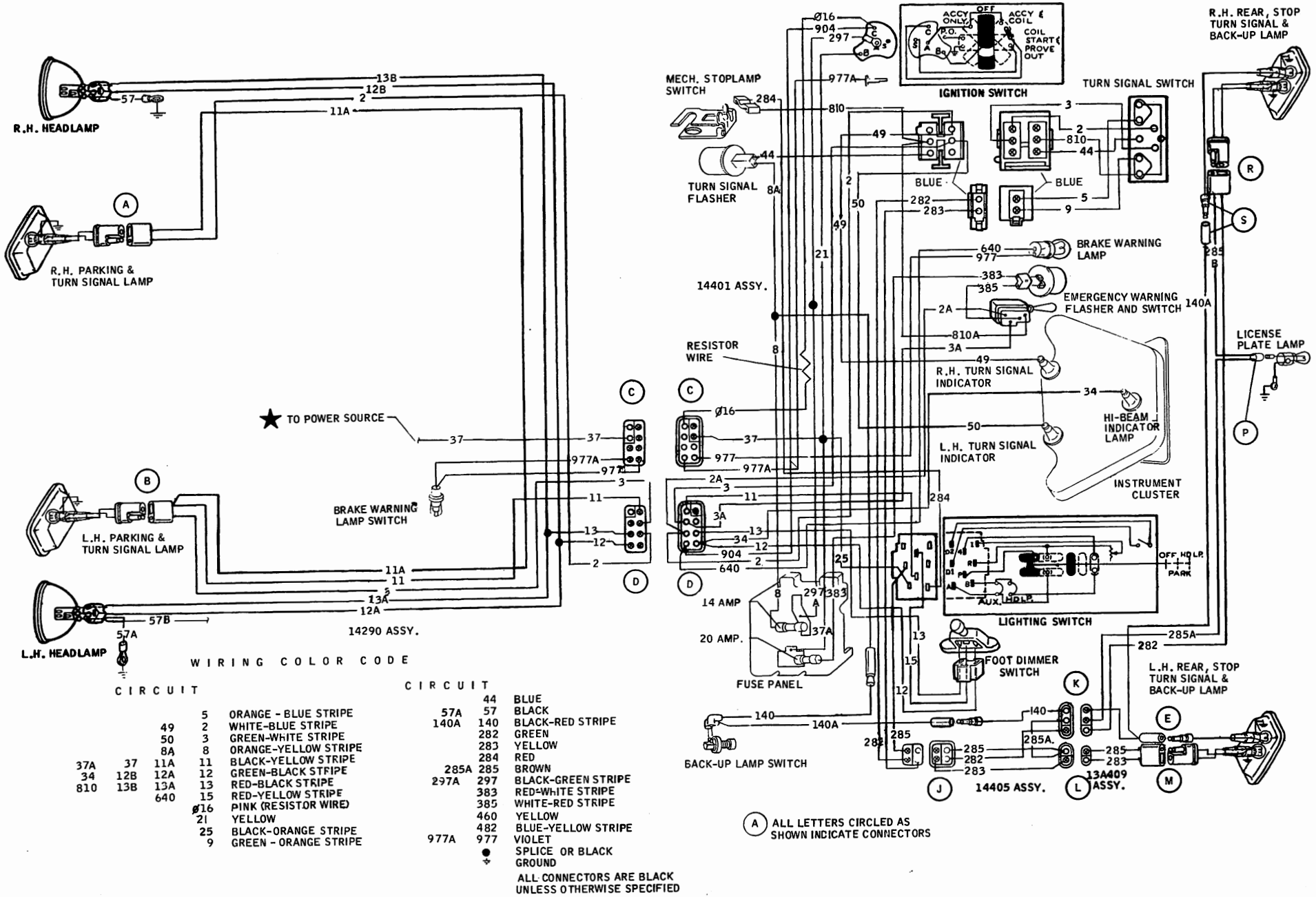
1969 BRONCO EXTERIOR LAMPS & TURN SIGNALS

8-E6


BUY IT NOW!
 Click Here To Order 





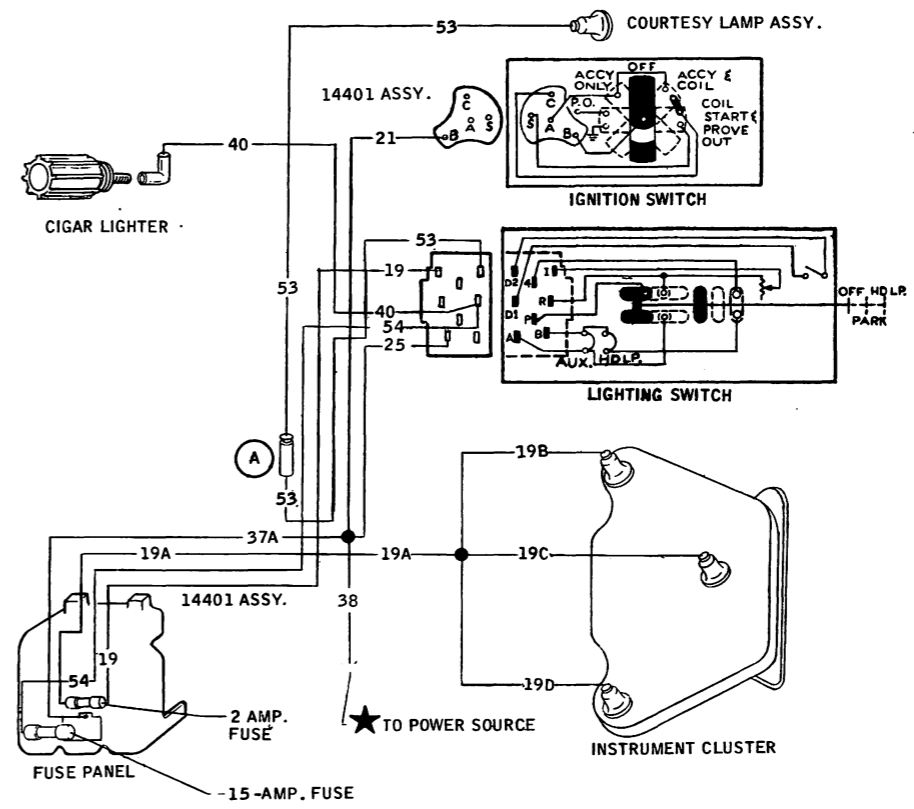
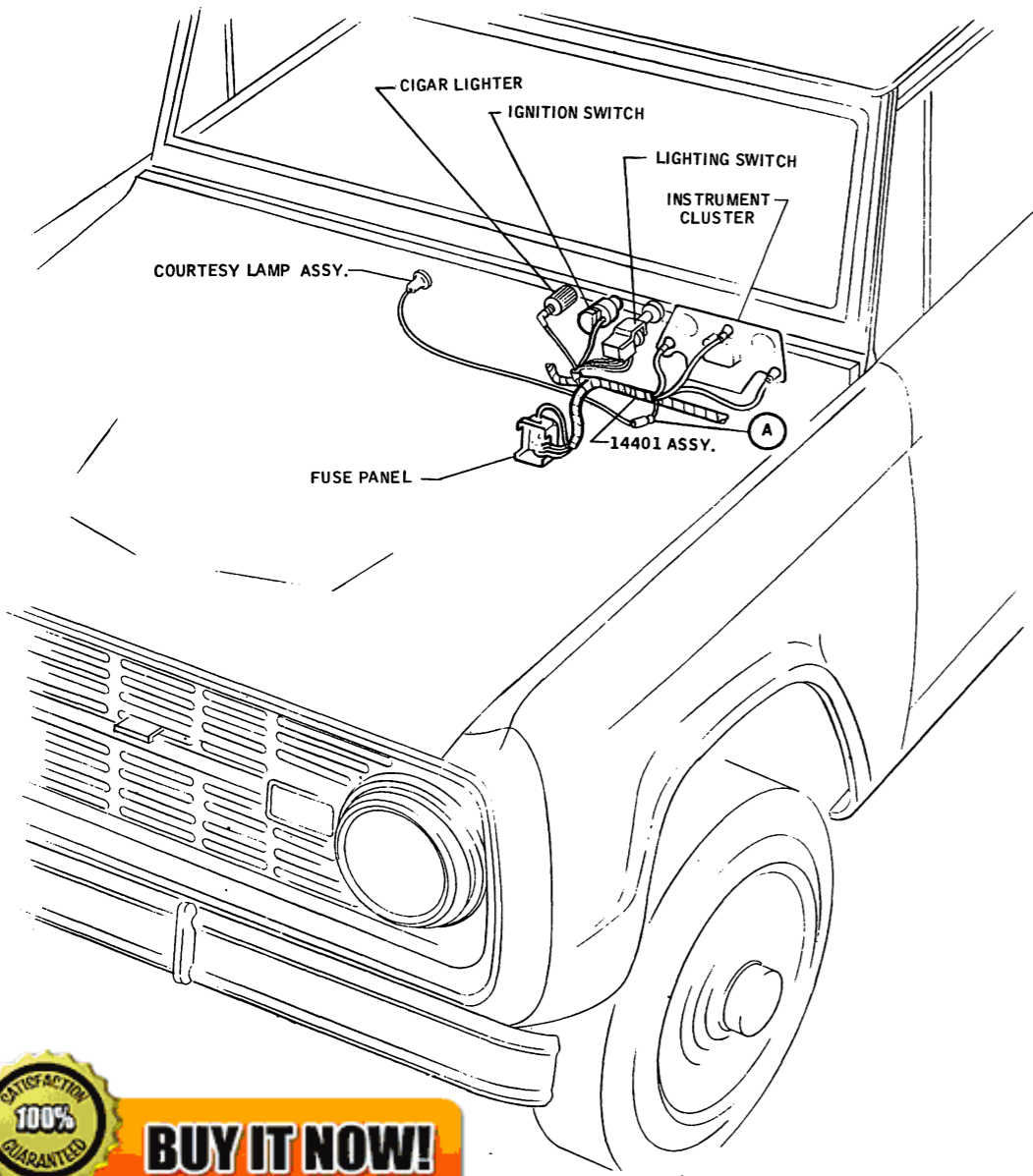
100% SATISFACTION GUARANTEED

BUY IT NOW!

[Click Here To Order](#)

PayPal Discover American Express MasterCard VISA

1969 BRONCO EXTERIOR LAMPS & TURN SIGNALS



WIRING COLOR CODE

38	BLACK
19D THRU 19	BLUE-RED STRIPE
21	YELLOW
25	BLACK-ORANGE STRIPE
37B 37A	BLACK-YELLOW STRIPE
40	BLUE-WHITE STRIPE
53	BLACK-BLUE STRIPE
54	GREEN-YELLOW STRIPE
•	SPLICE
⊥	GROUND

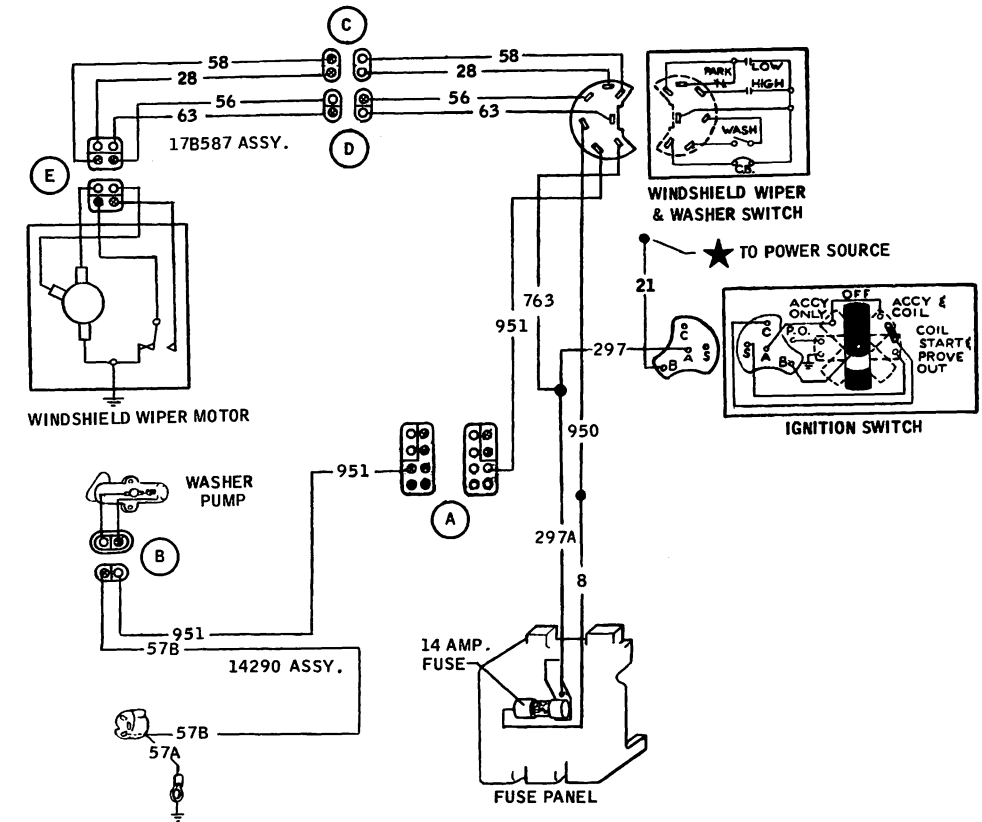
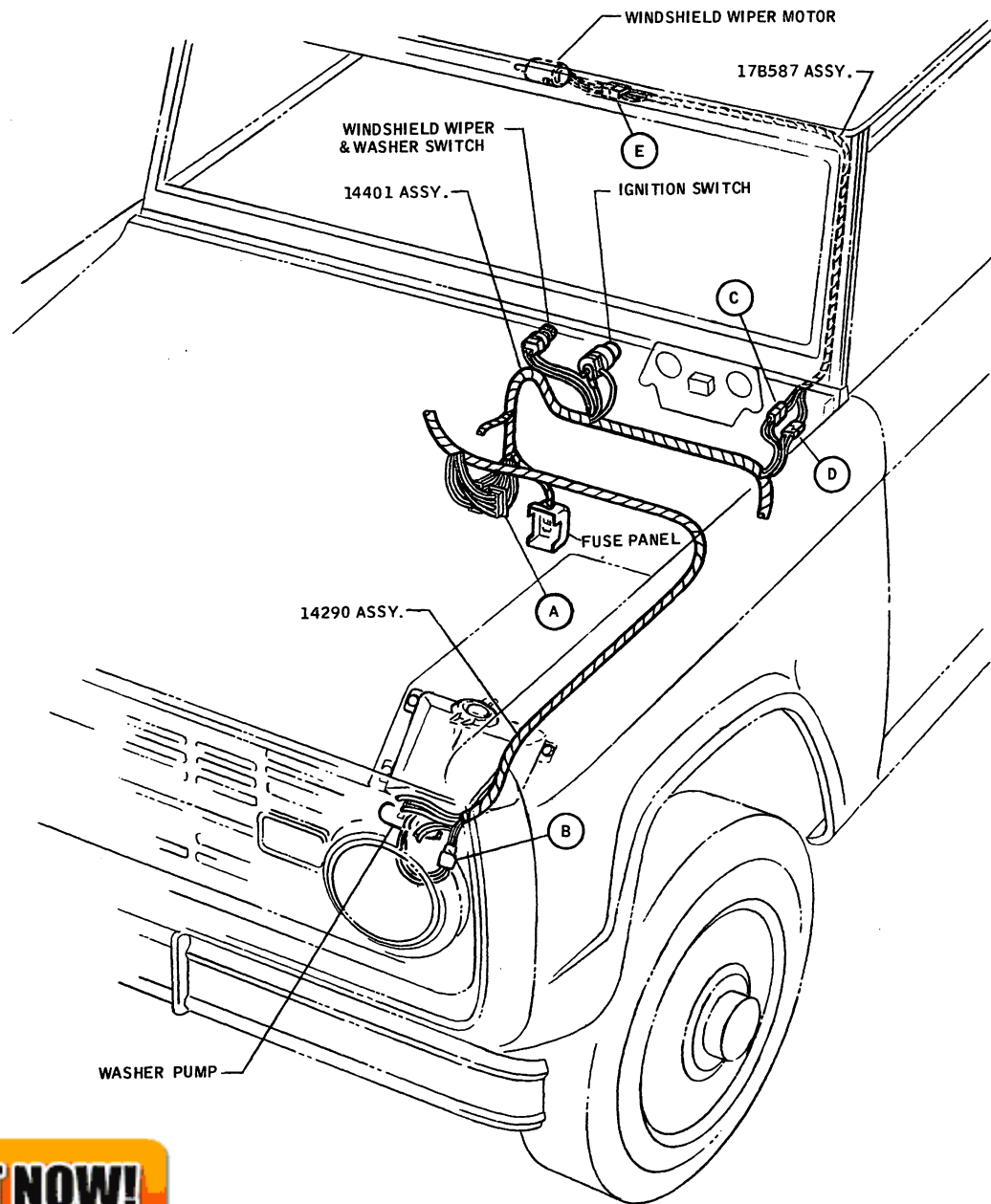
(A) ALL LETTERS CIRCLED AS SHOWN INDICATE CONNECTORS

100% SATISFACTION GUARANTEED

BUY IT NOW!

Click Here To Order

969 BRONCO INTERIOR LAMPS, INSTRUMENT LAMPS, CIGAR LIGHTER



WIRING COLOR CODE

CIRCUIT		
	8	ORANGE-YELLOW STRIPE
	21	YELLOW
57B 57A	28	BLACK
	56	BLUE
950	58	WHITE
	63	RED
	951	GREEN-BLACK STRIPE
297A	297	BLACK - GREEN STRIPE
	763	ORANGE - WHITE STRIPE
	•	SPLICE
	⊥	GROUND

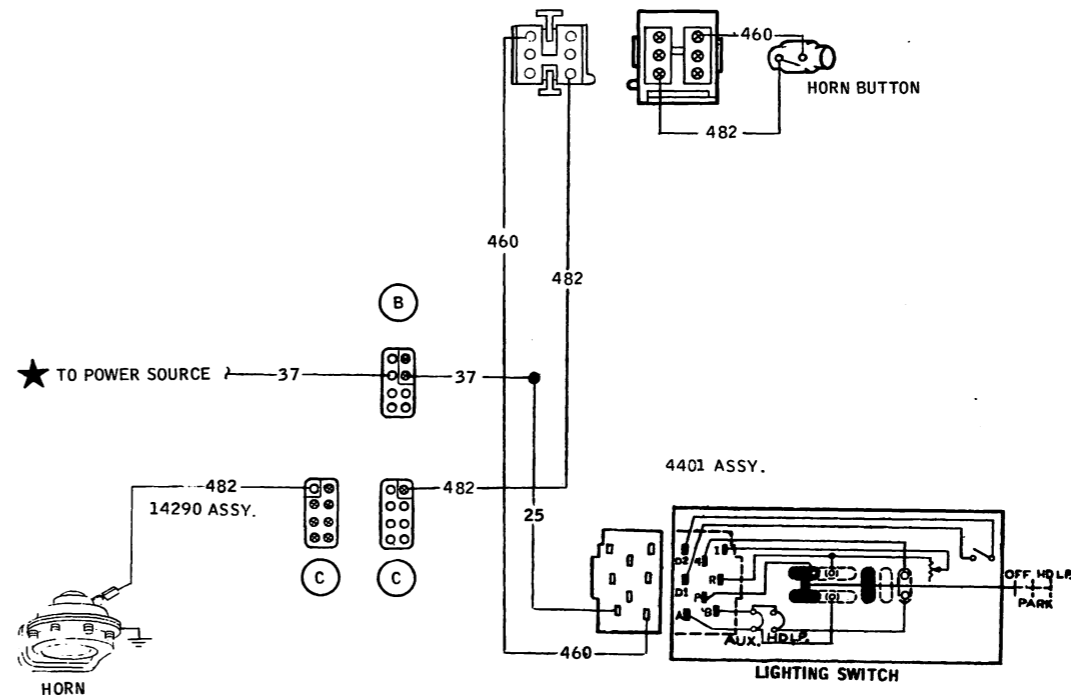
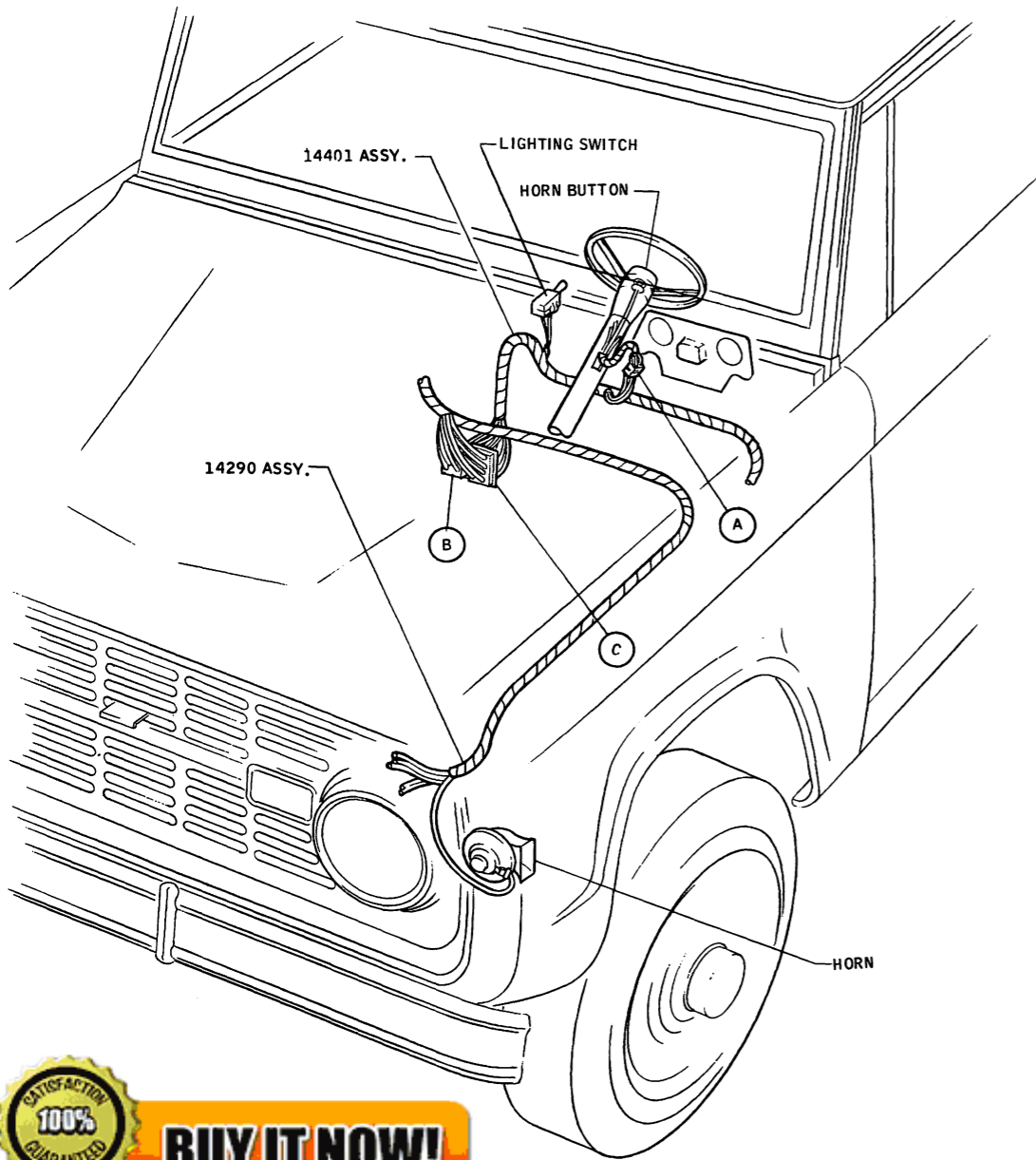
(A) ALL LETTERS CIRCLED AS SHOWN INDICATE CONNECTORS

100% SATISFACTION GUARANTEED

BUY IT NOW!

[Click Here To Order](#)

1969 BRONCO WINDSHIELD WASHER



WIRING COLOR CODE

CIRCUIT

- 25 BLACK-ORANGE STRIPE
- 37 BLACK-YELLOW STRIPE
- 460 YELLOW
- 482 BLUE-YELLOW STRIPE

- SPLICE
- ↓ GROUND

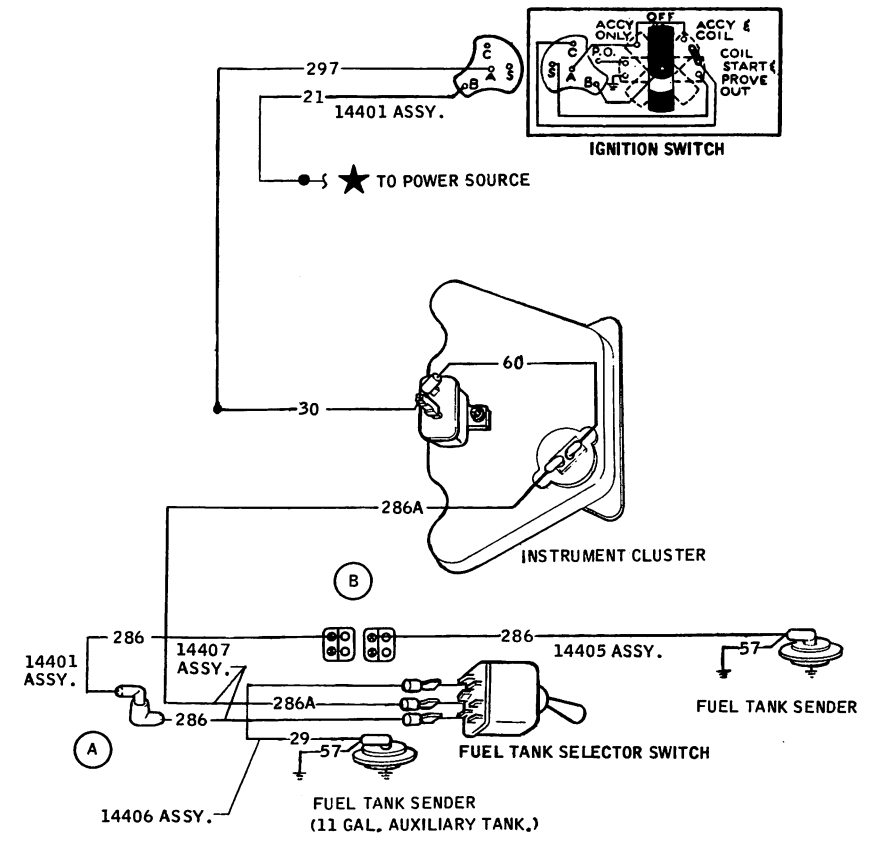
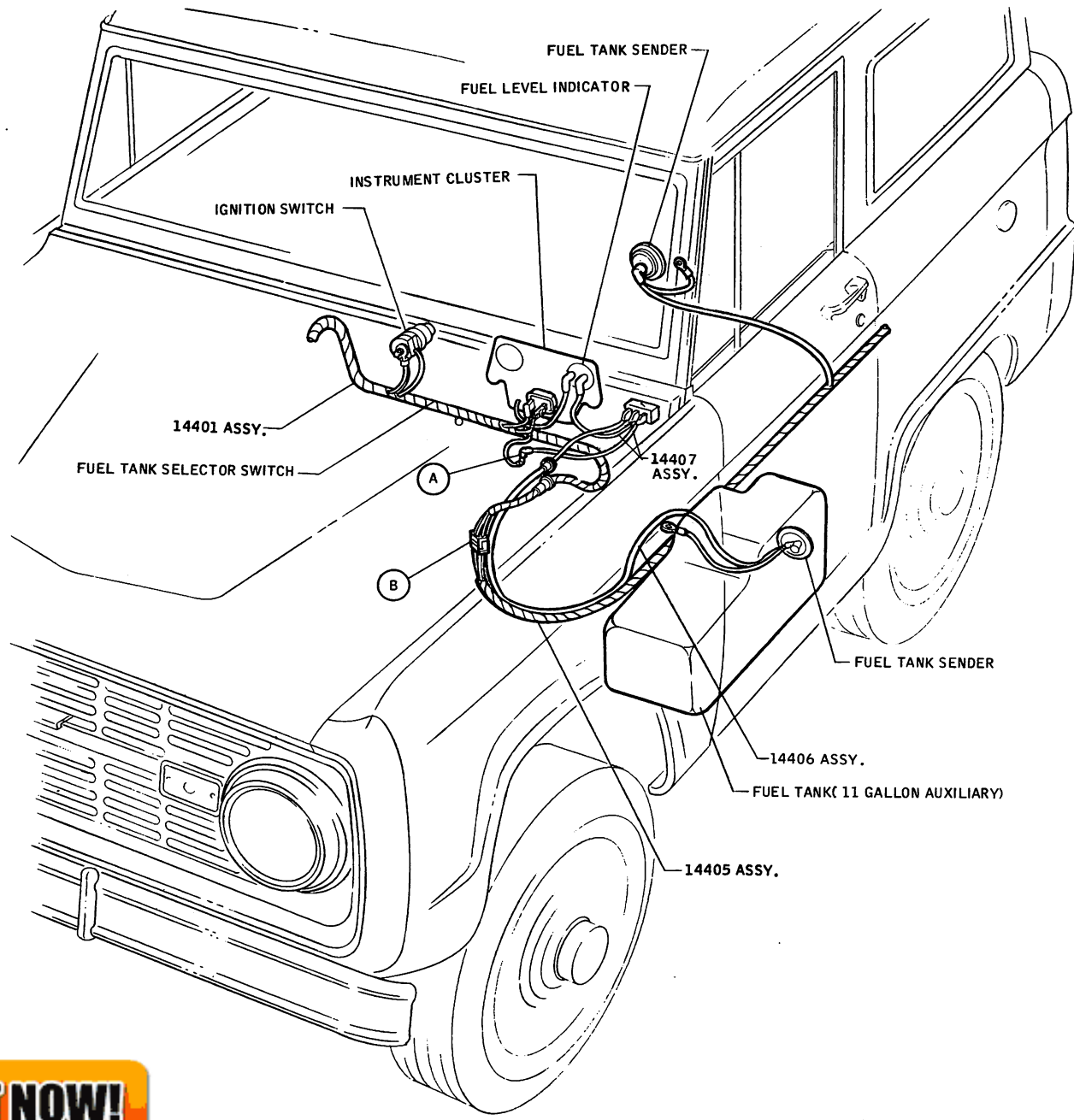
(A) ALL LETTERS CIRCLED AS SHOWN INDICATE CONNECTORS

100% SATISFACTION GUARANTEED

BUY IT NOW!

[Click Here To Order](#)

PayPal American Express Discover MasterCard VISA



WIRING COLOR CODE

- 21 YELLOW
- 29 YELLOW-WHITE STRIPE
- 30 BLACK-GREEN STRIPE
- 57 BLACK
- 60 BLACK-WHITE STRIPE
- 286 ORANGE
- OR ORANGE
- SPLICE
- ⊥ GROUND

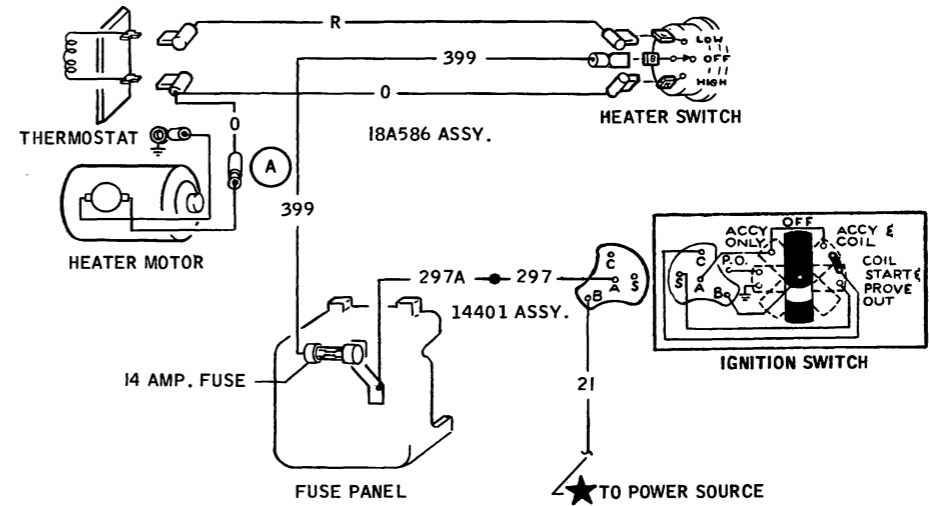
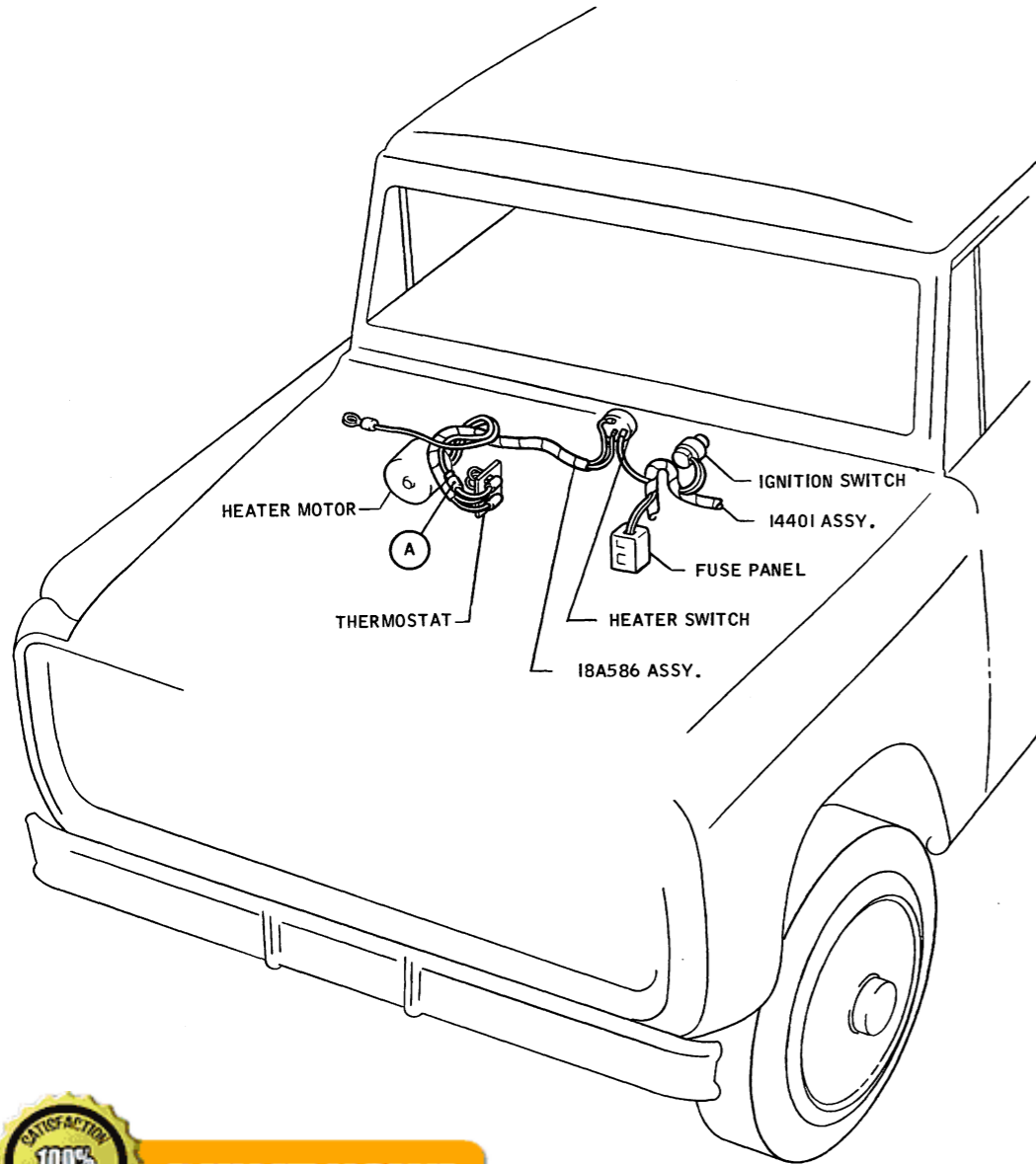
(A) ALL LETTERS CIRCLED AS SHOWN INDICATE CONNECTORS

100% SATISFACTION GUARANTEED

BUY IT NOW!

Click Here To Order

1969 BRONCO FUEL TANK (AUXILIARY)



WIRING COLOR CODE

- 21 YELLOW
- 297A 297 BLACK-GREEN STRIPE
- 399 BROWN
- R RED
- 0 ORANGE
- SPLICE
- ⊥ GROUND

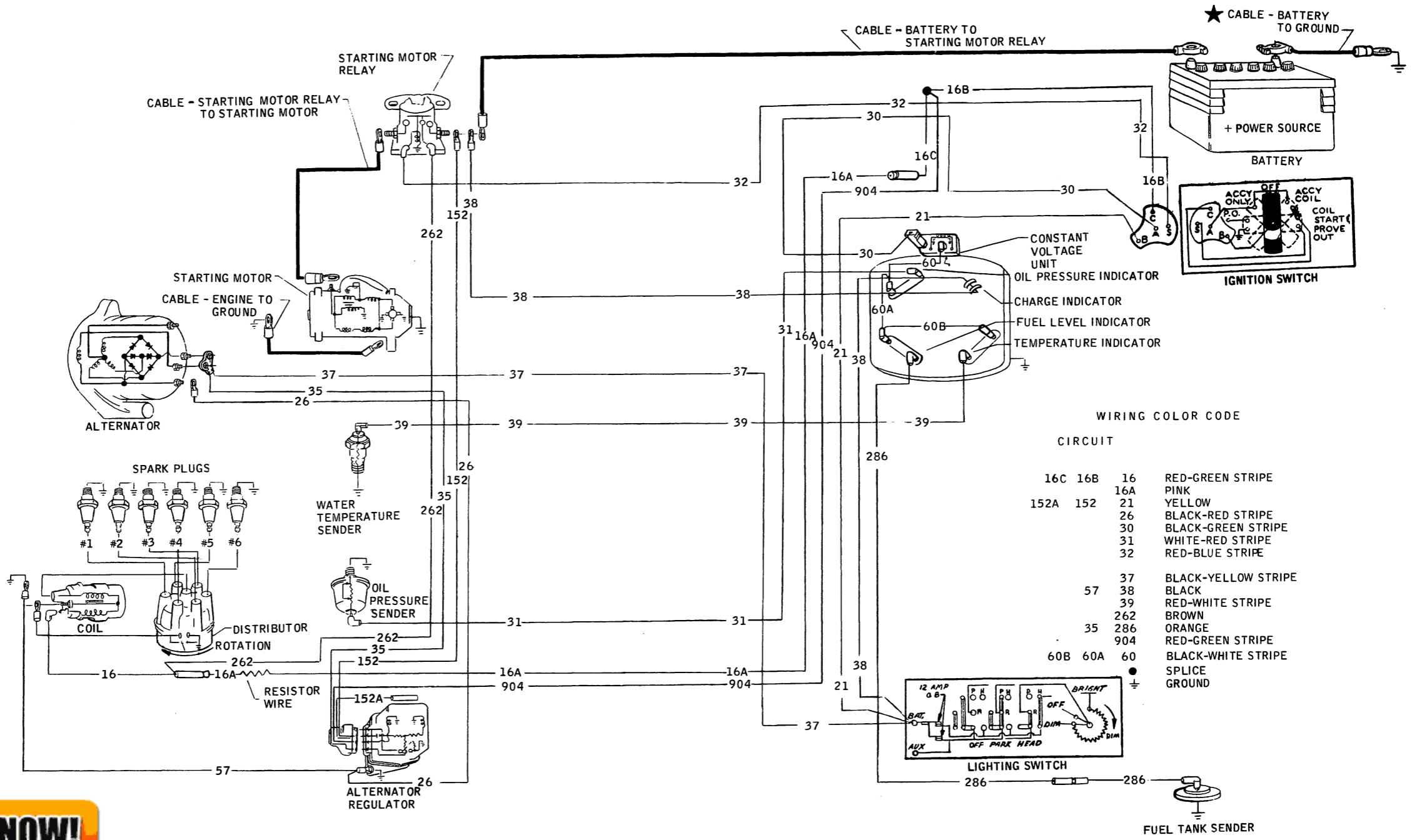
100% SATISFACTION GUARANTEED

BUY IT NOW!

Click Here To Order

1969 BRONCO HEATER

8-E12



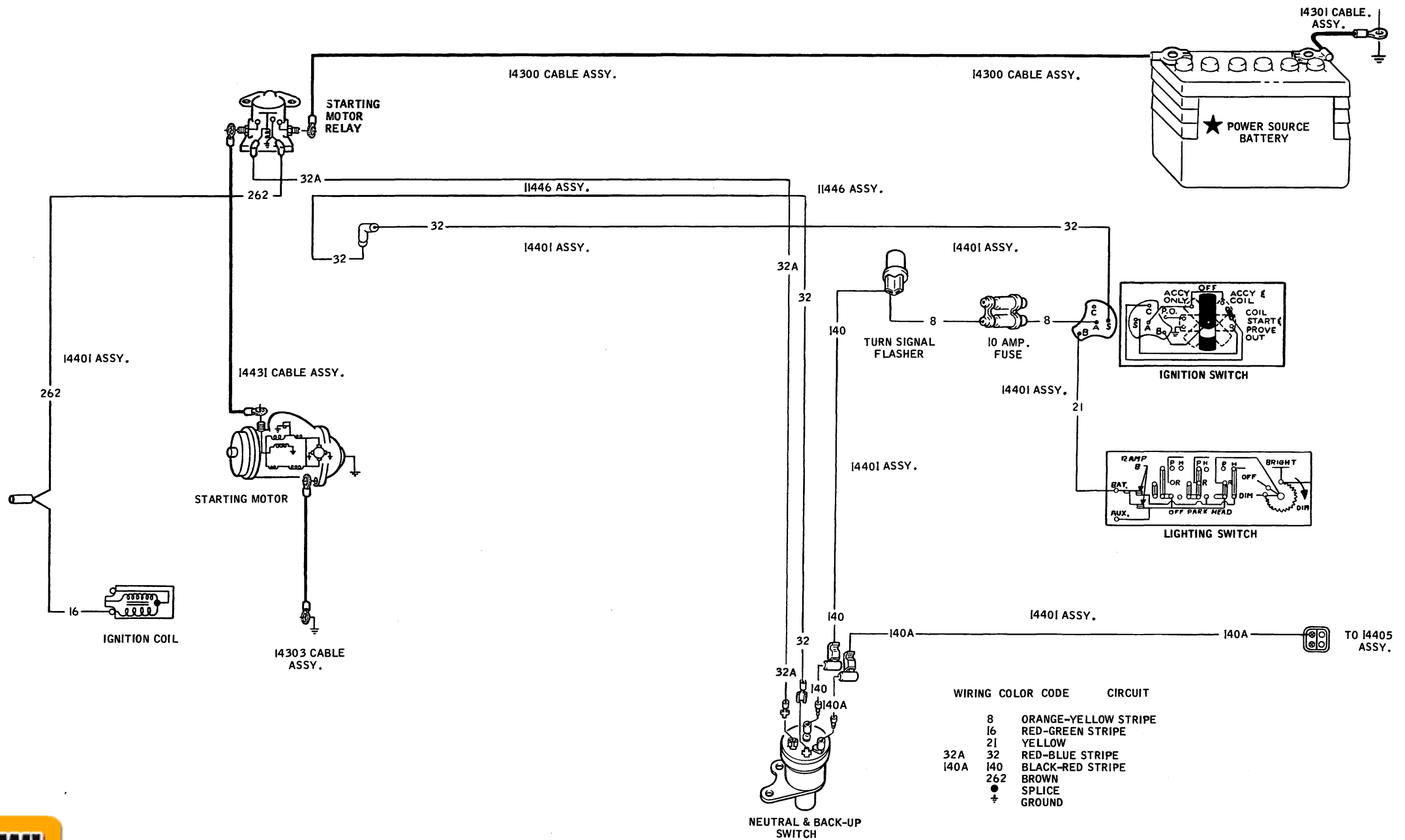
100% SATISFACTION GUARANTEED

BUY IT NOW!

[Click Here To Order](#)

PayPal, American Express, Discover, MasterCard, VISA

1969 P-SERIES IGNITION, STARTING, CHARGING & GAUGES (GASOLINE)



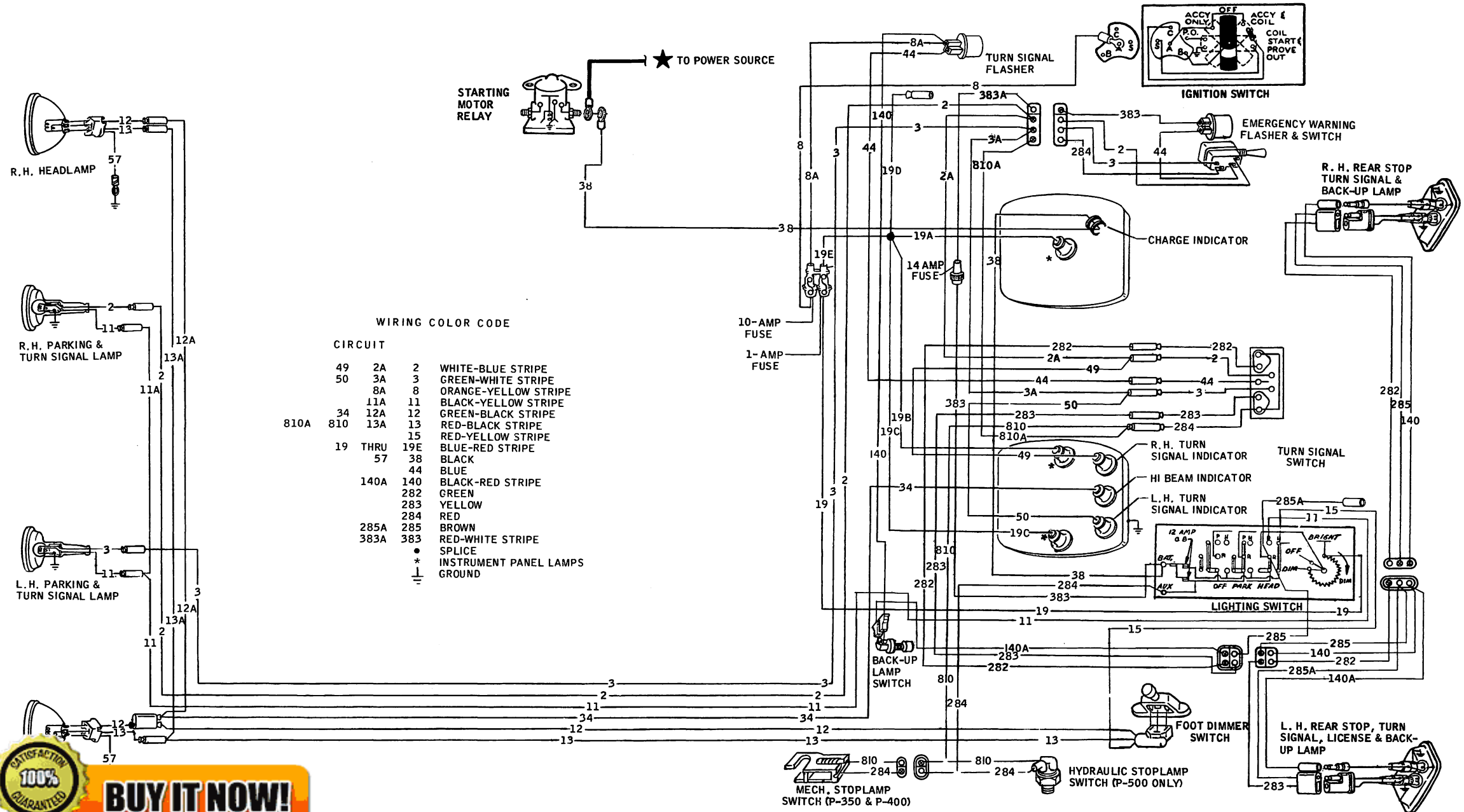
100% SATISFACTION GUARANTEED

BUY IT NOW!

[Click Here To Order](#)

PayPal American Express Discover MasterCard VISA

1969 P-SERIES STARTING STANDARD TRANSMISSION (GASOLINE)



100% SATISFACTION GUARANTEED

BUY IT NOW!

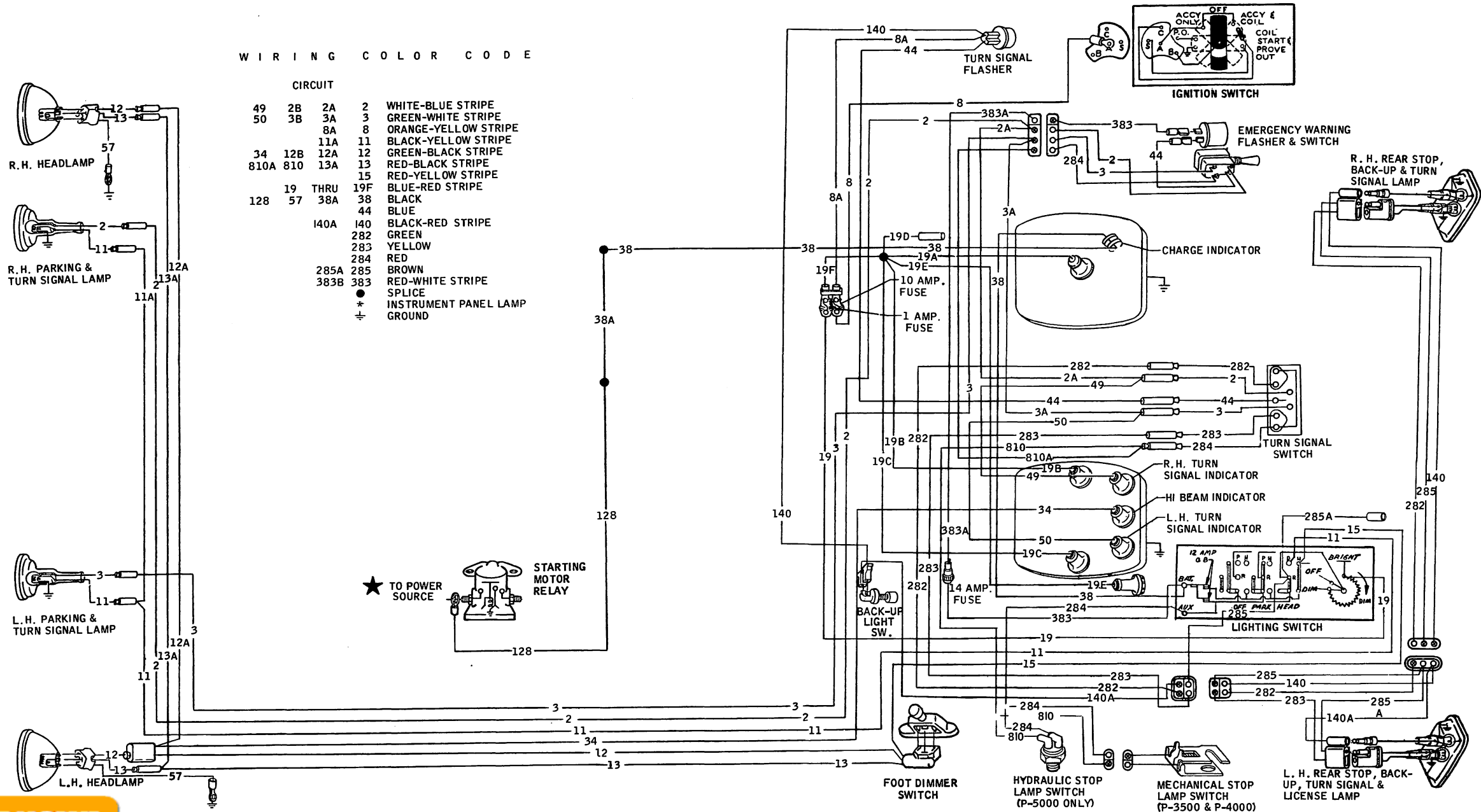
Click Here To Order

PayPal, American Express, Discover, MasterCard, VISA

FOR LAMPS, INSTRUMENT LIGHTS, TURN SIGNAL LIGHTS & EMERGENCY WARNING FLASHER 8-E16

WIRING COLOR CODE

CIRCUIT				
49	2B	2A	2	WHITE-BLUE STRIPE
50	3B	3A	3	GREEN-WHITE STRIPE
		8A	8	ORANGE-YELLOW STRIPE
		11A	11	BLACK-YELLOW STRIPE
34	12B	12A	12	GREEN-BLACK STRIPE
810A	810	13A	13	RED-BLACK STRIPE
			15	RED-YELLOW STRIPE
19	THRU	19F		BLUE-RED STRIPE
128	57	38A	38	BLACK
			44	BLUE
		140A	140	BLACK-RED STRIPE
		282		GREEN
		283		YELLOW
		284		RED
285A	285			BROWN
383B	383			RED-WHITE STRIPE
		●		SPLICE
		*		INSTRUMENT PANEL LAMP
		⊕		GROUND

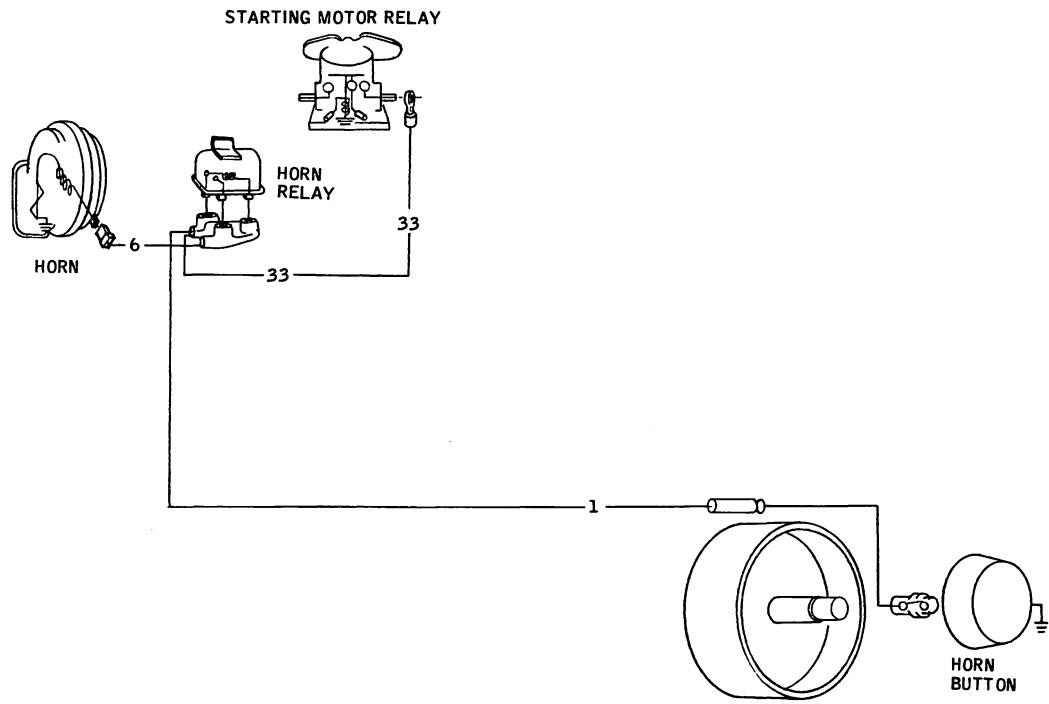
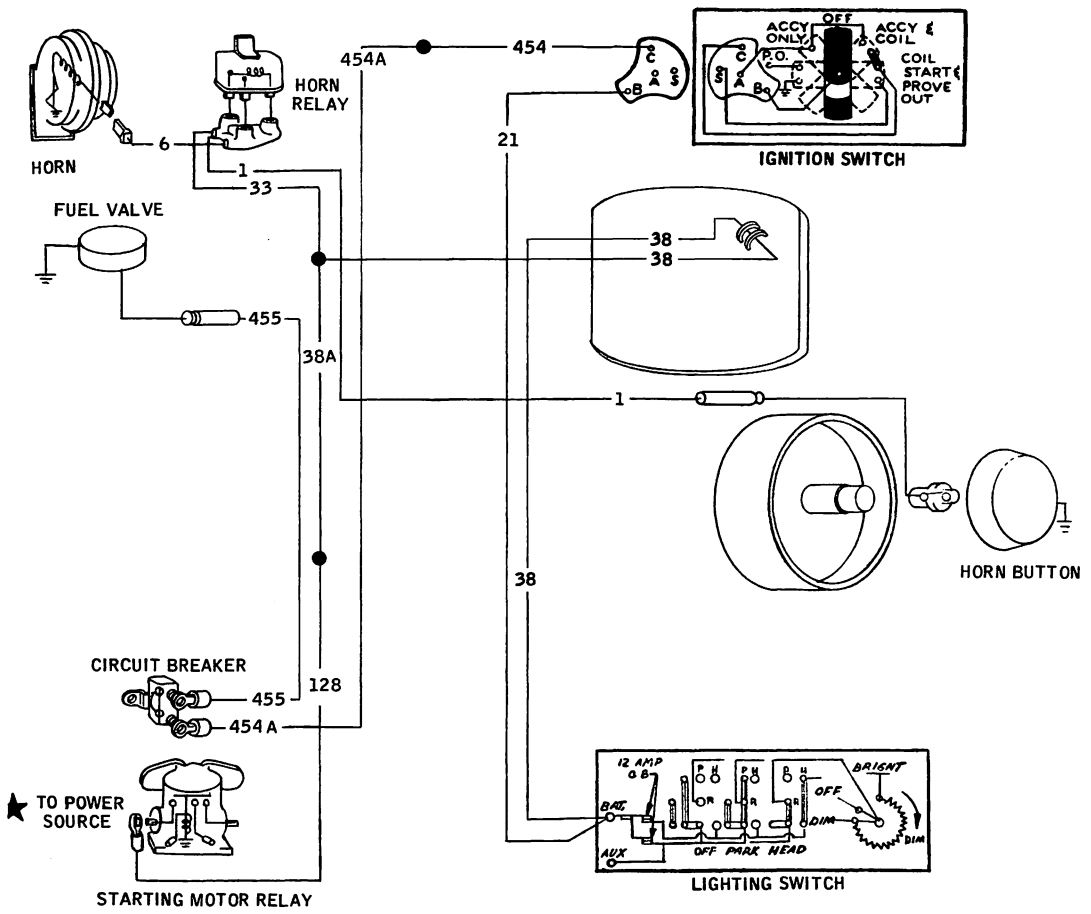


100% SATISFACTION GUARANTEED

BUY IT NOW!

[Click Here To Order](#)

RIES EXTERIOR LAMPS, INSTRUMENT LIGHTS, TURN SIGNAL LIGHTS & EMERGENCY WARNING FLASHER 8-E17



HORN WIRING FOR SERIES P-350 THRU P-500

WIRING COLOR CODE

CIRCUIT	Color
1	BLUE-YELLOW STRIPE
6	YELLOW-GREEN STRIPE
33	YELLOW
21	YELLOW
128	38A 38
	BLACK
454	454
	RED-GREEN STRIPE
454A	455
	GREEN-RED STRIPE
	● SPLICE
	+ GROUND

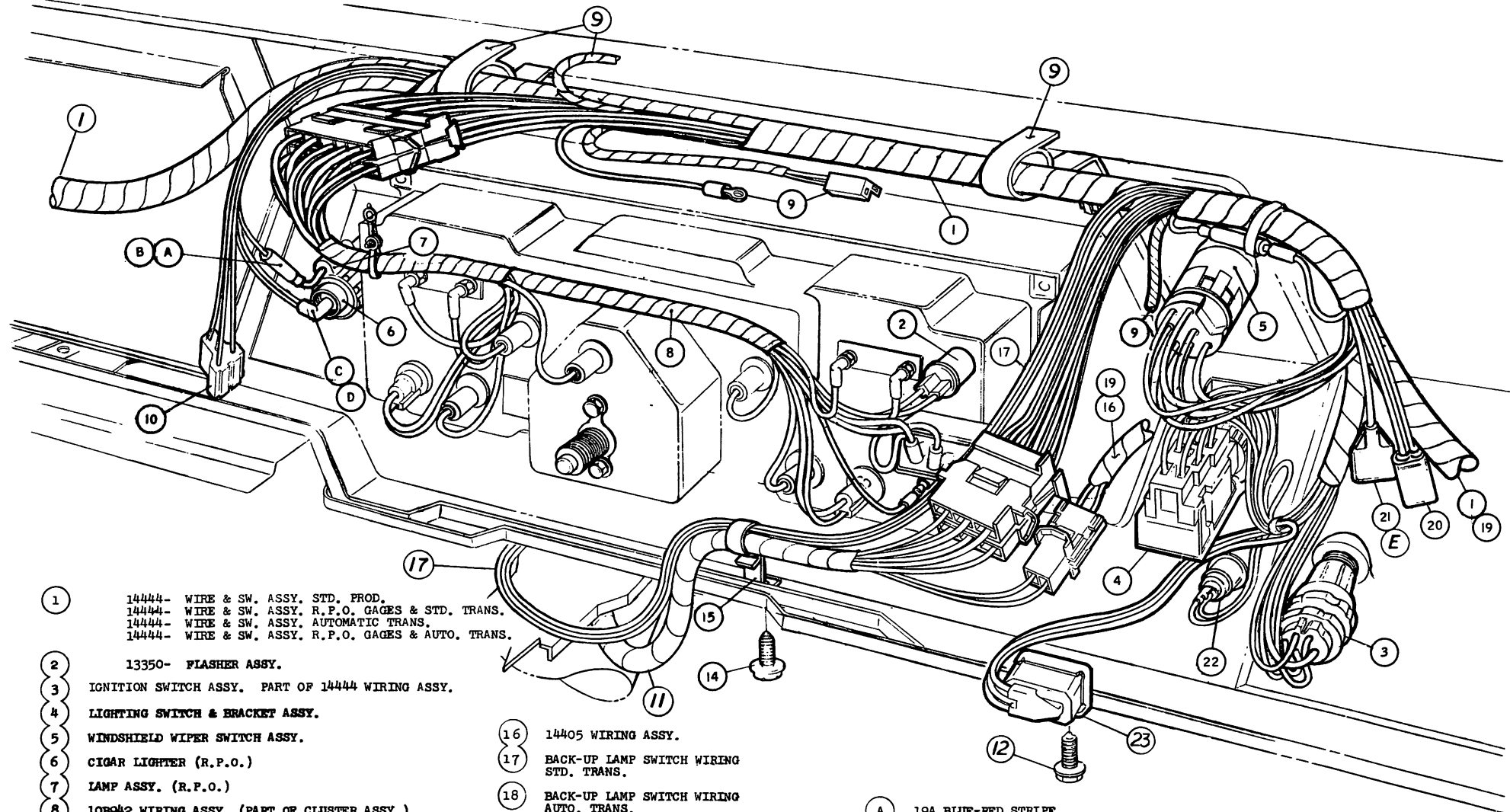
FUEL SHUT-OFF & HORN WIRING FOR SERIES P-3500 THRU P-5000

100% SATISFACTION GUARANTEED

BUY IT NOW!

Click Here To Order

SERIES FUEL SHUT-OFF (SERIES P-3500 THRU P-5000) & HORN (SERIES - ALL)



- | | | | |
|----|---|----|--|
| 1 | 14444- WIRE & SW. ASSY. STD. PROD.
14444- WIRE & SW. ASSY. R.P.O. GAGES & STD. TRANS.
14444- WIRE & SW. ASSY. AUTOMATIC TRANS.
14444- WIRE & SW. ASSY. R.P.O. GAGES & AUTO. TRANS. | | |
| 2 | 13350- FLASHER ASSY. | | |
| 3 | IGNITION SWITCH ASSY. PART OF 14444 WIRING ASSY. | | |
| 4 | LIGHTING SWITCH & BRACKET ASSY. | | |
| 5 | WINDSHIELD WIPER SWITCH ASSY. | | |
| 6 | CIGAR LIGHTER (R.P.O.) | | |
| 7 | LAMP ASSY. (R.P.O.) | | |
| 8 | 10B942 WIRING ASSY. (PART OF CLUSTER ASSY.) | | |
| 9 | | | |
| 10 | SEE AFFECTED HEATER PAGES | | |
| 11 | STEERING COLUMN WIRING | | |
| 12 | SCREW | | |
| 13 | FUSE PANEL WIRING | | |
| 14 | SCREW | | |
| 15 | CLIP ASSY. | | |
| | | 16 | 14405 WIRING ASSY. |
| | | 17 | BACK-UP LAMP SWITCH WIRING
STD. TRANS. |
| | | 18 | BACK-UP LAMP SWITCH WIRING
AUTO. TRANS. |
| | | 19 | |
| | | 20 | COURTESY LAMP SWITCH WIRING |
| | | 21 | ACCESSORY FEED |
| | | 22 | DUAL BRAKE WARNING LAMP |
| | | 23 | 13853- HORN RELAY |
| | | A | 19A BLUE-RED STRIPE |
| | | B | 19B BLUE-RED STRIPE |
| | | C | 40 BLUE-WHITE STRIPE |
| | | D | 54 GREEN-YELLOW STRIPE |
| | | E | 297A BLACK-GREEN STRIPE |

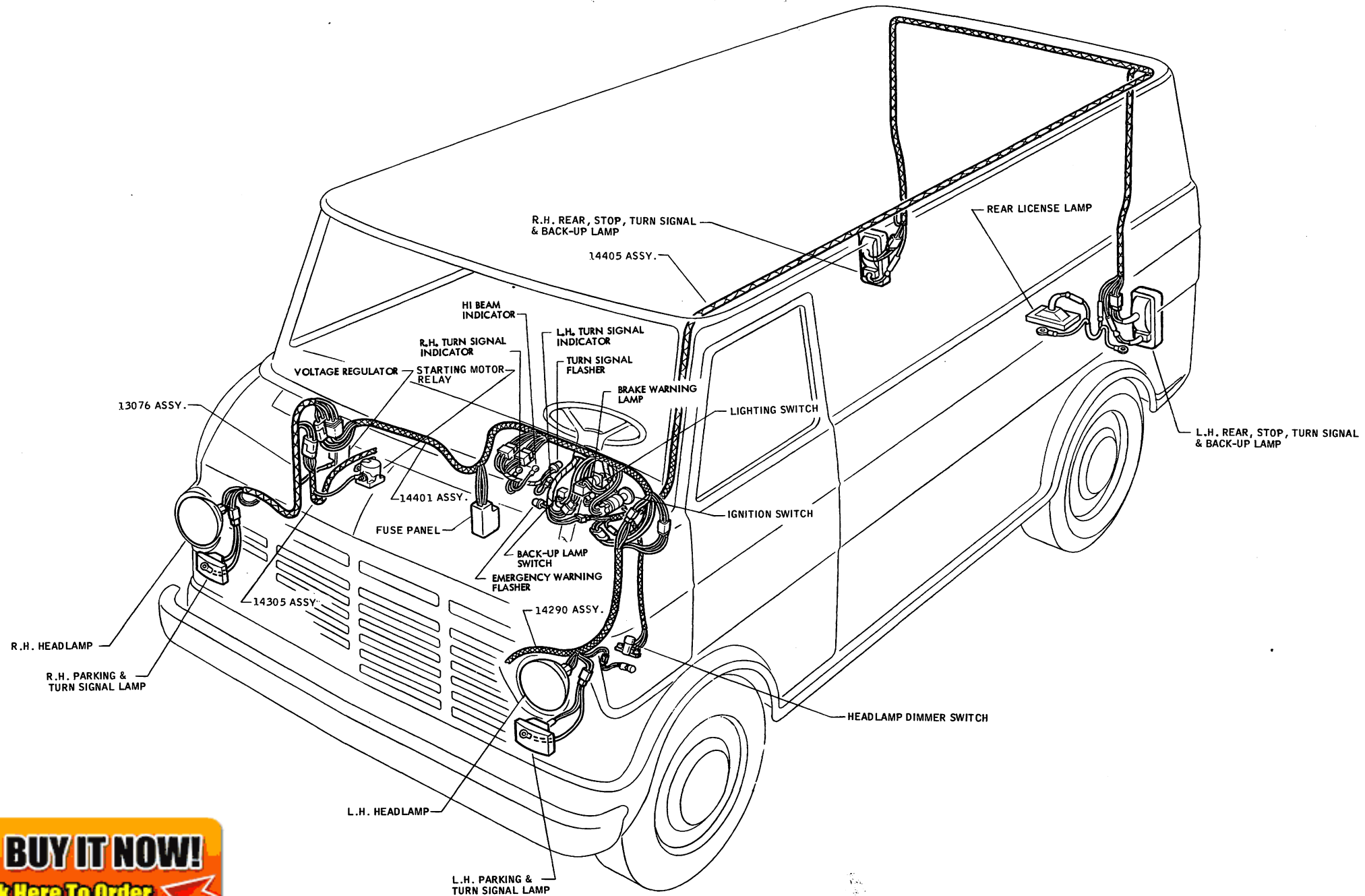
100% SATISFACTION GUARANTEED

BUY IT NOW!

[Click Here To Order](#)

PayPal Discover MasterCard VISA

1969 ECONOLINE INSTRUMENT PANEL WIRING



100% SATISFACTION GUARANTEED

BUY IT NOW!

Click Here To Order

1969 ECONOLINE EXTERIOR LIGHTS & TURN SIGNALS